



التراث انترناشيونال

Altorath International

للإستشارات الهندسية ذ.م.م Engineering Consultants L.L.C



# Contents

Introduction	5
Chairman's Message	7
Vision, Mission & Values	8
Our People	10
Approach	11
AIC Management Staff	12
Organization Structure	13
Why Altorath?	14
Awards	17
Services	18
Clients	23
Offices/Contact Us	24
Projects	26
AAG	176



“

Since the formation in 1989, Altorath International Engineering Consultants L.L.C. have become one of the largest and most respected providers of architectural, engineering design and project management services in the GCC region.

”

## Introduction

As of today we have +400 team members in 12 offices across the GCC region. We are a recognized industry leader in our specialist fields and pride ourselves in being a 100% UAE National Company.

In pursuit of excellence AIC delivers a fully integrated range of professional services that combine to make a real difference to our clients and the communities in which we work.

AIC is organized to encourage the creative process, to cross-pollinate ideas and talents across offices and deliver quality at all levels, in all places. Our passionate pursuit of excellence, the application of our creativity to solve our clients' challenges, our technical expertise and

our collaborative spirit are measures of our success. Each of us is charged with nurturing the firm's next generation by demonstrating excellence.

AIC has created a culture that embraces diversity, inspires innovation with a purpose to create, enhance and sustain the world's built, natural and social environments.



“

Our focus is based on client satisfaction together with, creating innovative and sustainable solutions. This approach results in continued long-term client collaborations that form the cornerstone of the company.

”





## Chairman's Message

We continue to make great strides towards meeting our strategic goals and objectives in the pursuit of adding value to our services and markets. Our focus is based on client satisfaction together with, creating innovative and sustainable solutions. This approach results in continued long-term client collaborations that form the cornerstone of the company.

Our employees apply and promote our core values of Client Focus, Excellence, Teamwork, Diversity, Innovation and Ethics, as we offer our clients over three decades of practical industry experience in our commitment to deliver high-quality services.

The success of AIC has prompted us to expand our skills and capabilities. We have entered new industry sectors. Our clients have encouraged us to bring our approach to a wider portfolio of challenges and we have been eager to diversify our business to the benefit of our growth. We

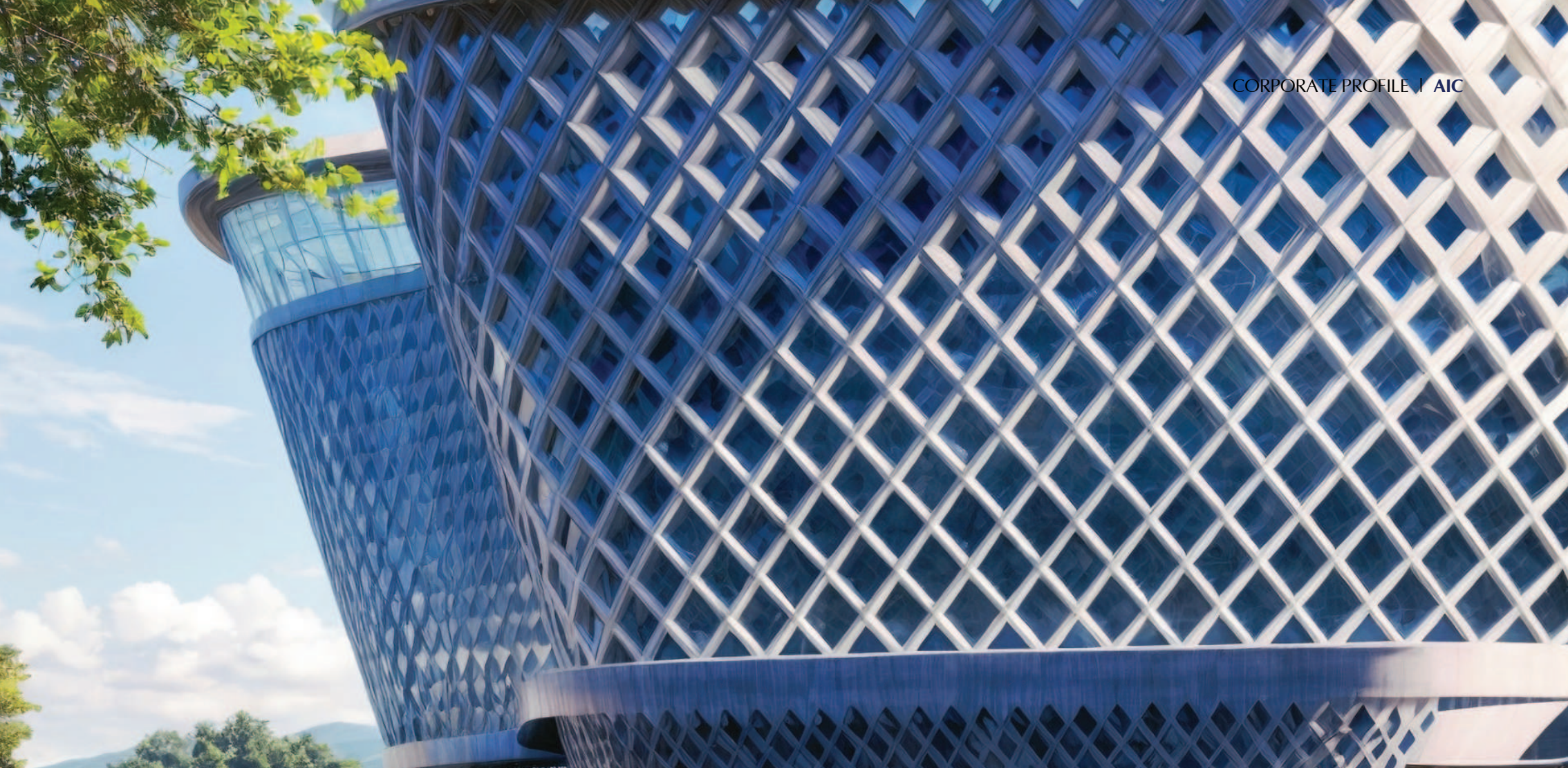
have also aimed to recruit the industry's best people to ensure we always make a mark in each new sector we enter.

Our progress is also driven by our commitment to sharing knowledge and always defining and redefining the best industry practices. We capture our innovation on a given project and then reapply it in new sectors and contexts.

We manage our sector expansion with care, ensuring that we accept commissions only when we have the skills and people in place to deliver the level of AIC service that our clients have come to expect.

We seek to further and promote collaboration, integrity and honourable practice. Our final goal is to provide a professional service that is safeguarding our client's legitimate interests and ambitions efficiently and effectively.

Eng. Ahmed Almazrouei,  
Chairman



## Vision

---

AIC aspires to be a leading architectural, engineering and project management firm operating regionwide.

## Mission

---

To consistently deliver innovation solutions reinforced by responsive client service and a commitment to quality and excellence.

## Values

---

Our values drive us forward as an organisation and bind us together as a community. AIC has maintained its status and reputation by incorporating our values in:





### Client Focus

---

Our success is based on our strong relationships with our clients and we strive to provide premium solutions which exceed our clients expectations.

### Excellence

---

We constantly strive for excellence, recognising that excellence is defined by our clients. We apply state-of-the-art technologies and seek innovation and improvement. The core of what we do is ensuring engineering and design integrity.

### Teamwork

---

We work together to add great value to clients. Our teams are diverse in their disciplines, ideas, perspectives and cultures.

### Diversity

---

We are committed to diversity. The richness of our relations and the success of our pursuits, individually or collectively, are influenced by the extent to which we respect, listen to and appreciate one another irrespective of differences.

### Innovation

---

We thrive on creativity and ingenuity. We seek opportunities to innovate in the services we deliver, business development and our operations.

### Ethics

---

We have a steadfast adherence to a strict moral and ethical code. Enduring commitment to professional ethical standards is deeply ingrained in every professional conduct and business action undertaken by all AIC staff members.

“

At AIC, our professionals work seamlessly with clients through the entire life cycle of a project. We use our unparalleled depth and breadth of resources to ensure practical program management solutions that meet today's project challenges.

”

AIC's focus on attracting and retaining top talent stems from recognizing the importance of having a team that brings diverse perspectives and expertise. We value employees with varied backgrounds and experiences, creating an environment where innovative solutions can flourish.

Our emphasis on professionalism and technical excellence ensures that our employees consistently deliver high-quality work. This commitment to excellence not only enhances AIC's reputation but also fosters a culture of continuous improvement and learning. Our core values serve as guiding principles, and by adhering to these values, employees can align their actions with the company's overall mission and vision.

AIC's interdisciplinary approach, which blends science, engineering, and design, underscores the company's commitment to addressing complex environmental and infrastructure challenges. By leveraging a diverse set of skills and expertise, employees can develop holistic solutions that effectively tackle these pressing issues.

Overall, AIC's emphasis on talent, values, purpose, and interdisciplinary collaboration creates a dynamic and rewarding work environment where employees can thrive and make meaningful contributions to society.



## Approach

AIC is a firm with a clearly defined organization structure. It is designed to ensure 'right people on right job' with clearly defined roles and responsibilities.

We operate via a highly efficient, robust and cross-functional structure that allows for a healthy and progressive growth in size, skill and quality.

The Organizational Chart shows the relationship between the company's various divisions and departments. All chart components contribute as required to the overall effort of engineering and project management on any specific project.

Headed by a Project Manager, different teams are devised as per the requirements of the specific project, which are responsible for directing all project activities and is sustained during the project lifetime. All members of the team, whilst responsible to the Project Manager for all matters related to the project, remain responsible to their Section and Department heads for quality and conformity with design standards and practices adopted in AIC manuals.

# AIC Management Staff

“

A high-level executive input and oversight to all our projects ensures that we bring value added assistance to the most feasible, functional, cost effective and successful solutions.

”



## Engr. Ahmed Almazrouei

Founder, Chairman AAG

M.Sc, Command & Staff Collage, Dec. 1993.

B. Sc, Civil Engineering, Wayne State University, USA, May, 1986.

Recipient of the Sheikh Rashid Award for Scientific Achievement, UAE.

Held several senior governmental positions.

Professional Experience: 37 years.



## Engr. Mohamed Almazrouei

Vice Chairman AAG

B.Sc., Construction Engineering, The University of Toledo, Toledo, OH, USA, June 2011.

Attended numerous professional training courses.

Professional Experience: 13 years.



## Engr. Ali Ahmed Almazrouei

Vice Chairman AAG / Quality and Follow up Affairs

B.Sc., Construction Engineering, The University of Toledo, Toledo, OH, USA August 2014.

Project & Planning Engineer for 5 years in Abu Dhabi General Services Company/ Musanada.

Registered Engineer in Abu Dhabi Municipality, UAE.

Professional Experience: 10 years



## Engr. Mohamed Mazen Al Jabi

CEO, Vice Chairman AAG

MBA, Chifley Business School at Torrens University, Australia.

B.Sc., Civil Engineering, Syria, 1988.

Recipient of AAG Chairman's Award - 2011 for Outstanding Achievement.

Held several senior positions in Construction and Engineering Consultancy sectors.

Professional Experience: 36 years.



## Engr. Mohamed Mohsen

COO, Engineering Sector

B.Sc., Architecture Engineering and Urban Planning.

Chartered Member - Royal Institute of British Architects (RIBA).

Chartered Member - American Institute of Architects (AIA).

LEEDs Green Associate Certificate, PQP, Certified KPI, Revit, and ICIDL

Project Management Professional: PMI-PMP, PMI-RMP and PMI-PBA.

Professional Experience: 16 years.



## Engr. Wael Sayed

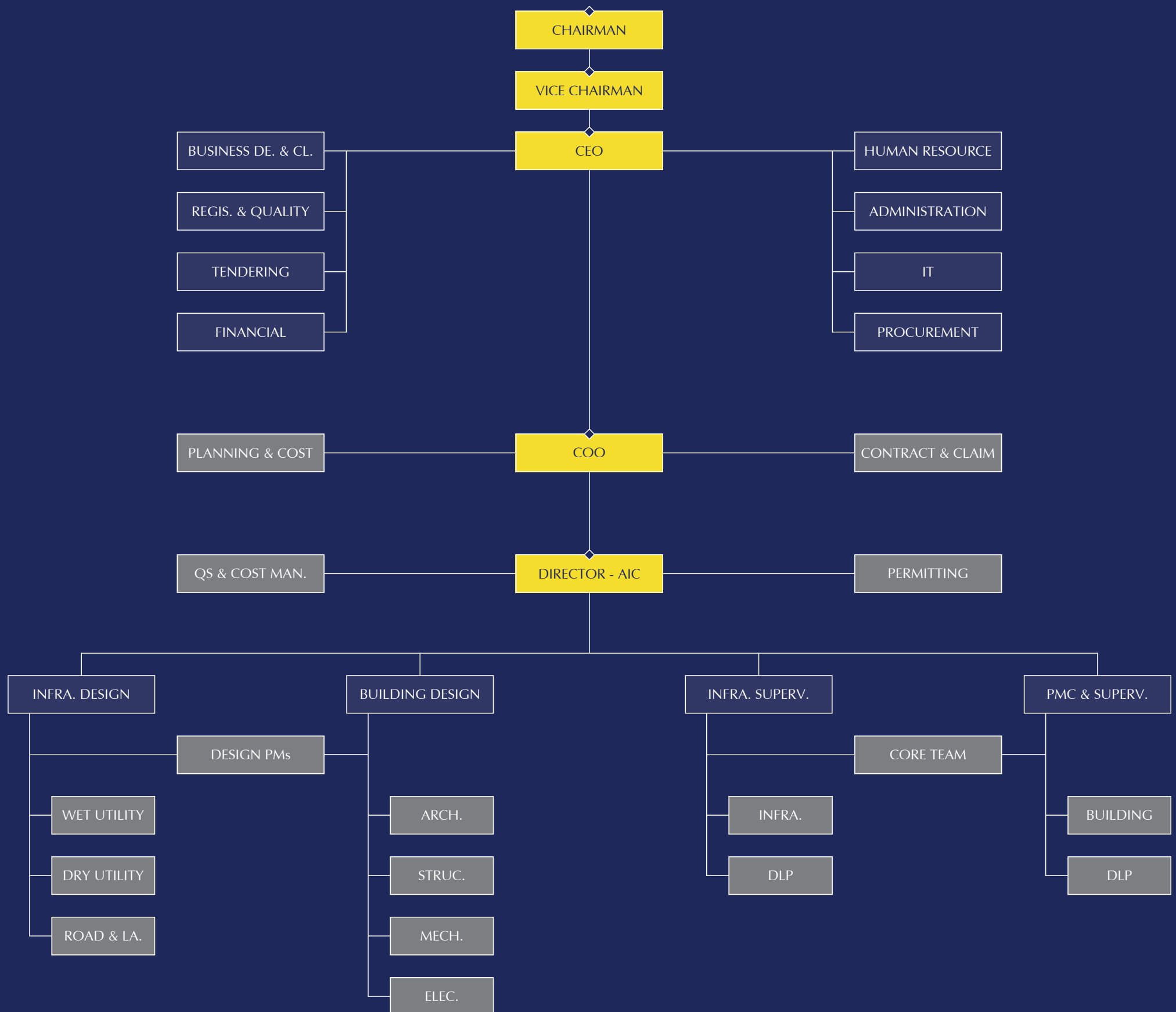
Director, AIC - UAE

B.Sc., Architecture Engineering.

Proficient in AutoCAD, 3Ds Max, V-ray, Adobe Photoshop, Sustainable Design and Microsoft Programs.

Professional Experience: 18 years.

# Organization Chart



# Why Altorath?



We are 'THE FIRST AND ONLY LOCAL CONSULTANT' awarded with Sheikh Khalifa Excellence Award (SKEA)



## +400 professionals and experts

With a manpower pool of over +400 of highly skilled Architects, Engineers and other disciplines, equipped with state of the art technologies, we are very well versed in designing and managing (PMC) any project of any size, nature or complexity with fast staff deployment and immediate commencement of work.



## More than 3 decades of extensive local experience and knowledge

Over the past three decades of our work in the region, we have gained an extensive local experience and practical knowledge of clients' needs, local culture design knowledge, markets trends, excellent relations with projects stakeholders, vast database and a wide networks of specialized experts & consultants. We offer creative, robust and practical solutions to realize our clients' objectives.



## Multidisciplinary firm and one stop resource

We are a multidisciplinary & one stop resource firm, with all in-house design & management staff members in all disciplines: Architecture, Planning, Structural, MEP, Infrastructure, Environmental, HSE, QA/QC, Cost Estimate & QS and Project Management. We offer our clients a multitude and comprehensive range of services all under one roof.



### Experts in regulations and approvals process

We are experts in local building regulations, codes, engineering requirements and approvals process, in addition to our networks with regulatory authorities and consultants. This ensures fastest and most sufficient process of approvals and coordination between client's requirements and local rules and regulations.



### Regional engineering consulting and PM firm

We have over 12 offices across GCC region, and each one reflects the local architectural language, engineering knowledge and cultural spirit of the cities they're. Our regional presence provides with unique and valuable information to continuously enhance the services we provide to our Clients.



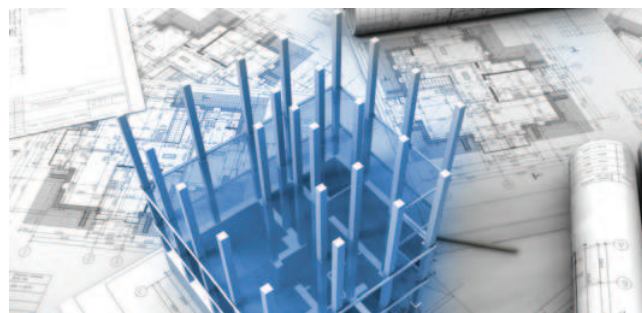
### Committed to our social responsibilities

We encourage UAE nationals to join our company and to learn from our long experience. Also we coordinate with universities and local institutes to provide theoretical and practical free training programs for students and fresh graduates of architects and engineers from all nationalities.



## In-Country Value Certification (ICV)

We are 100% local company, from 2018 we have ICV certificate, we are receiving many projects continuously from government and semi-government clients, investing in training and development programs to enhance the skills and capabilities of the local workforce. Our current score is 48.5+, the target ICV score is expected to be 60+ (during the next 2 years).



## Building Information Modelling (BIM)

We employ Integrated Design for seamless data exchange, utilizing BIM LOD 300 for precise modeling in the design phase. Our programming and O&M integration guarantees that designs fulfill planned functionalities and maintenance requirements. Centralized data management is made possible by utilizing CDE Local Server and cloud-based platforms like BIM 360, which promote cooperation and project efficiency.



## AIC Equipment Capabilities

We guarantee effective mobility for our team by managing a fleet of more than forty-three vehicles. In addition, we keep a strong IT network to serve a variety of operations with over 258 PCs and laptops. Simplified documentation and presentation skills are enhanced by more than 46 printers and plotters. We are outfitted with more than 16 sophisticated instruments, such as GPS, total station, GPR, and others.



# Awards and Appreciations

AIC is honoured to be the first Engineering Consultancy and Project Management Firm to be awarded the prestigious Sheikh Khalifa Excellence Awards (SKEA) in 2006 and 2017. The SKEA was launched by the Abu Dhabi Chamber of Commerce and Industry (ADCCI) back in 1999 as a blue print, a road map and a methodology for continuous improvement aimed at enhancing the competitiveness of the Business Sector in Abu Dhabi and the UAE. It is the first award of its kind to be aligned with the International Best Practice and adoption of the EFQM excellence model. Apart from SKEA, Altorath has received numerous Awards and Appreciations from its prestigious clients which includes:

- Borouge.
- Critical Infrastructure and Coastal Protection Authority.
- Presidential Guard.
- Abu Dhabi Police.
- Abu Dhabi Municipality.
- ADNOC.
- Al Ain Municipality.
- Musanada.
- UAE University.
- Abu Dhabi University.
- MEED & MECA.



“

We thrive on creativity and ingenuity. We are convinced that there is often a better way to do things. So we seek opportunities to innovate in the services we deliver, our business development and our operations.

”



## Architecture

While our professionals have expertise in diverse areas, they share the a common goal; designing facilities that will meet our clients' needs and contribute to their success. We challenge and inspire while make sure we provide functionality, to deliver impressive buildings on time and to budget. Our wide-ranging knowledge and expertise, coupled with a profound commitment to our clients needs, enables us to deliver buildings that are beautiful, durable and cost-effective. We can deliver integrated architecture and engineering, or focus any of our speciality on perfecting a single building detail. Listening to the things that make an asset valuable to our clients, and to their buildings users, gives direction to our designs.

## Structural Design

The Structural Design Division provides complete design services from project inception to construction administration. Through constant coordination with architects, contractors, engineers and other design team members we provide accurate, detailed and value-oriented design documents for safe and lasting structures. We provide economical structural systems, suitable for various project types with a philosophy to create a Structural Design that would complement the Architectural Design facilitating ease of construction. Our staff are well experienced in designing a large variety of projects, some being extremely challenging in their structural design . We have extensive experience supervising different projects under strained quality and delivery time conditions.



## Interior Design

At AIC we design interior spaces that improve collaboration, inspire occupants and attract the best employees. Our interior design teams study a client's business drivers and culture and create space that helps them flourish. Great interior space has extraordinary effects on our wellness and productivity. AIC's design solutions use space, colour, materials, energy and light as tools to create healthy environments that enhance performance. AIC develops innovative and elegant design concepts that integrate the historic traditions of the region with the possibilities and materials offered by the most up to date, world-class technology.



## Electrical & Mechanical

AIC combines electrical and mechanical engineering knowledge in building systems and intelligent systems technology that ensures this necessary combination of safety, power, and illumination. Our technical ingenuity powers electrical engineering that is design-led and sustainable. Our electrical specialists work seamlessly with mechanical and public health engineers to create complete building services solutions. Our flexibility enables us to adapt throughout the design process and interpret specific problems, allowing us to drive hard at a solution. Our mechanical systems create environments that are comfortable for occupants, economic for owners and efficient with resources. We regularly go beyond standard mechanical engineering solutions to create a better balance for clients.



## Landscape

The landscape team focuses on the big picture—helping clients to achieve the goals in environment control and landscaping in the most cost-effective way. Our landscape designers work closely with other specialists to produce more rounded solutions. We become part of integrated design teams from the start. We develop and realise pragmatic ideas that are economic and achievable as well as being better for people and the environment. For clients and design teams, we play an important interpretative role: taking the advice of environmental specialists and translating it into deliverable plans. We analyse the surrounding environment and give a sustainable solution taking into consideration all the elements which makes a perfect landscape for the setting of the vicinity.



## Infrastructure

AIC is passionate about helping its clients develop and manage their transportation assets and systems to reflect rapidly changing financial and cultural requirements. We provide integrated, whole-of-life solutions that are appropriate to local needs and reflect world best-practice in terms of efficiency, reliability and sustainability. Our portfolio of projects include road maintenance, engineering and construction and transportation infrastructure. We offer a multidisciplinary approach to projects, drawing on specialists from other sectors to ensure the success of every project we run. And, with the company services spanning the range of all civil engineering disciplines, AIC provides its infrastructure and transport customers with every service they need for a successful project of any size.



## Urban & Master Planning

AIC has a proven track record of successful urban design and planning within the Gulf region. AIC understands that sound urban design lowers the costs of urban management, controls both capital expenditures and current costs for public and private transportation and utilities operators, as well as creating efficiencies for private business location and subsequent operations. Our planning staff represent a full complement of professionals with experience in architecture, engineering, planning and master planned communities. We work with our clients to move them beyond the limits of their past by focusing on helping them progress into a sustainable future. Our work is highly regarded and based on the belief that good design is indivisible from good planning.



## Land Surveying

AIC have more than 15 years experience in land surveying works. We have gained experience and successfully provided surveying and incidental mapping services to Public Agencies, Consulting Civil Engineering firms and Contractors. Our professional surveyors, produce quality surveys in a timely manner, ensuring the first crucial steps of a project. AIC is recognized as a leader in professional land surveying and this is demonstrated through our commitment to our client's projects and the "cutting edge" technology that we utilize daily. Being involved from the outset of a property-related project, we can lend our expertise to the decision-making process. This allows us to help our clients arrive at solutions that allow them to take maximum benefit from our end-to-end service.



## Third Party Inspection

With a strong technical base, AIC/Ultratech has created a specialized group of talented, qualified and experienced engineers to cater to the industry demand of providing third party inspection services to LPG systems/ diesel storage tanks/LPG road tankers/CNG Road tankers/Flammable and combustible material road tankers/ hazardous material transportation/storage as per the requirements specified by Abu Dhabi civil defence. Our strong fundamentals and organisational support has created significant value addition to the quality of our TPI services. AIC/Ultratech is certified by Abu Dhabi Civil Defence to review LPG system project drawings/documents and to carry out Third party inspections for hazardous materials storage and transportation as per international and UAE codes and standards. Highly experienced team of engineers conduct design review and inspections. We conduct ultrasonic shell thickness gauging test, witness and certify hydro test, pressure & leak test for pressurized vessels, tankers and piping systems.



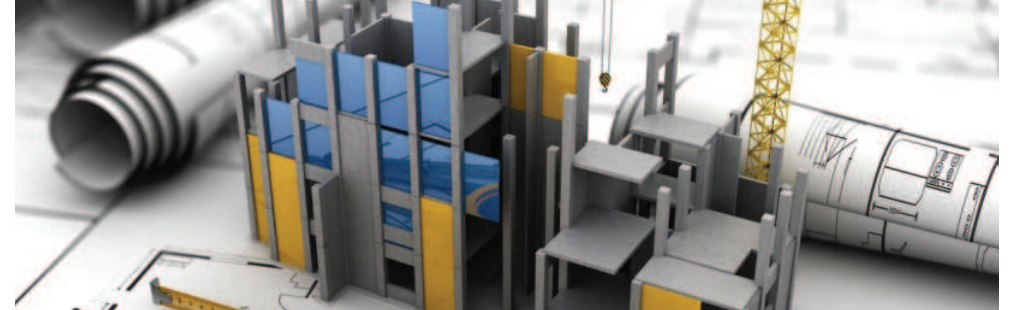
## Sustainability and Environment

AIC is extremely sensitive for its role in building an environment which instead of depleting the earth resources to the one that balances with nature. We start from within, and our staff are highly sensitive to every thought they put in the design process making sure not to lose sight to the consequences their decisions can make on the environment. We strive hard to provide our clients with best sustainable solution designing and delivering innovative, aesthetically inspiring and energy efficient solutions. AIC's innovative approach to sustainable and environment consulting enables clients to achieve their sustainable business and corporate responsibility aspirations. A wealth of technical expertise at AIC enables clients to incorporate sustainability into their strategies, projects and operation.



## Project Management

Our project management experts offer a flexible and highly bespoke service based on a robust and well-proven formula for delivery. We combine many years' experience with proven methods and tools and ensure our client's particular environments and organisations are tackled appropriately and effectively. Confidence of outcomes is increased, risk reduced and quality guaranteed because we understand your business and work closely with you. Working alongside our clients, we adopt a value-driven approach to defining and articulating business and project objectives before identifying the most effective means to deliver.



## Cost Management & QS

Our services for Quantity Survey and Cost Management are centered on the careful monitoring of project costs and the calculation of material quantities. By using careful cost planning, monitoring, and analysis, we guarantee effective control of the budget. We provide a full spectrum of management service from the preparation of business cases and the development of organisation frameworks to straightforward procurement, design, construction delivery and operation.



## Programme Management

At AIC our Programme Management experts identify our clients' strategic options and configure complex programmes from integrated projects. We have the experience to deliver a course of action that manages risk, time, cost and quality; the leadership to maintain complete control and transparency across the process; and the passion and enthusiasm to drive value at every turn. By providing strong, expert leadership from the start of a project, we give clients the level of confidence and assurance that they require. We develop programme delivery methodologies that are robust, transparent and based on experience drawn from large scale projects around the world. AIC bring the top resources and latest technologies to every project, applying our best practices and lessons learned.



## Construction Supervision

In our consulting engineering firm, construction supervision is keeping an eye on everything on the job site to make sure schedules, quality, safety, and design are followed. Our committed team makes sure that regulations and industry standards, specifications, IFC drawings are followed, which makes it easier to complete projects successfully and on schedule so that they exceed client requirements.



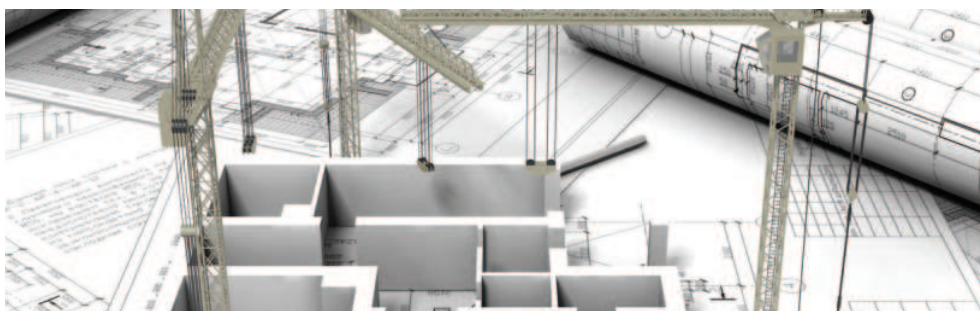
## BIM Implementation

We implement Integrated Design, a multidisciplinary team effort to guarantee seamless exchange of data. We use BIM LOD 300 for a detailed modeling for exact representation during the design development stage to follow the integration between Programming and O&M, anticipating the functionalities and future maintenance in mind. We use CDE Local Server and Cloud-Based Platforms like BIM 360, making use of the advantage that both cloud-based and local server platforms provide to handle data centrally.



## Building Engineering Assessment

Our Building Engineering Assessment is an in-depth evaluation that covers a structure's structural, architectural, and MEP components. The purpose of this full evaluation is to gain a comprehensive understanding of the building's state, identifying weaknesses, possible hazards, or opportunities for enhancement.



## Design Peer Review / Analysis

Our Design Review and Code Analysis services include an extensive evaluation of architectural plans and specifications. We carefully evaluate designs to make sure they comply with industry standards, building rules, and regulations. We can find possible problems or deviations through this procedure, which gives us important information for improving designs for efficiency and compliance.



## All GIS and As-built Drawings Preparation

We specialize in offering full-service GIS mapping and as-built drawing preparation, meeting tenant requirements and obtaining required approvals from relevant authorities, such as the Abu Dhabi Municipality (ADM). Our experience guarantees thorough and exact paperwork, which helps up the approval process and satisfies all legal and regulatory requirements.



## Clients

AIC have a proven track record and have been successful on delivering both large-scale and small-scale projects demonstrating flexibility and diversity. We offer our clients experienced, knowledgeable, and qualified teams, and our processes are designed with our clients needs in mind. We have build long term and sustainable relationships with our clients. We are eager, resourceful and flexible to clients needs and their challenges.

AIC's clients includes but are not limited to the following sectors:

- Governmental
- Semi Governmental
- Ministries
- Oil and Gas
- Developers
- Contractors
- Banks
- Consultants

# Offices

With pride, Altorath International Engineering Consultant operates twelve (12) offices across four (4) GCC (Gulf Cooperation Council) nations. Our strategic locations in the United Arab Emirates, Saudi Arabia, Qatar, and Oman enable us to efficiently handle the diverse needs of our valued customers and build lasting regional relationships.

Our presence in the UAE is marked by our head office in Abu Dhabi, complemented by offices in Al Ain, the Western Region, Ras Al Khaimah, Ajman, and Sharjah. These locations allow us to effectively manage local operations and benefit from the favorable corporate environment in the United Arab Emirates. In Saudi Arabia, our offices in Riyadh, Jeddah, Medina, and Yanbu offer a wide range of services. These locations ensure that we can provide tailored solutions and maintain strong local connections to deliver the best services. Additionally, our office in Muscat, Oman, enables us to extend our exceptional value and customized solutions to clients in this market.

Each office is staffed with experienced professionals who possess extensive knowledge of both local and international markets. Our broad GCC network at Altorath International Engineering Consultant highlights our dedication to quality, innovation, and customer satisfaction, ensuring that we remain at the forefront of market trends.

## CONTACT US

**ABU DHABI, UAE (Head Office)**  
AAG H.Q, Al A'sam Street, Abu Dhabi, UAE, P.O Box: 4644

Tel: +971 (2) 404 1444  
Fax: +971 (2) 678 8620

**RIYADH, KSA**

Tel: +966 (11) 2660142  
Fax: +966 (11) 2660142

**AL AIN, UAE**

Tel: +971 (3) 766 6470  
Fax: +971 (2) 678 8620

**JEDDAH, KSA**

Tel: +966 (12) 6615478  
Fax: +966 (12) 6615632

**WESTERN REGION, UAE**

Tel: +971 (2) 404 1400  
Fax: +971 (2) 678 8620

**MEDINA, KSA**

Tel: +966 (12) 6615478  
Fax: +966 (12) 6625632

**RAS AL KHAIMAH, UAE**

Tel: +971 (2) 404 1444  
Fax: +971 (2) 678 8620

**YANBOU, KSA**

Tel: +966 (12) 6615478  
Fax: +966 (12) 6625632

**AJMAN, UAE**

Tel: +971 (2) 404 1444  
Fax: +971 (2) 678 8620

**DOHA, QATAR**

Tel: +971 (2) 404 1444  
Fax: +971 (2) 678 8620

**SHARJAH, UAE**

Tel: +971 (2) 404 1444  
Fax: +971 (2) 678 8620

**MUSCAT, OMAN**

Tel: +971 (2) 404 1444  
Fax: +971 (2) 678 8620





SAUDI ARABIA

QATAR

UAE

OMAN

“

At AIC, our professionals work seamlessly with clients through the entire life cycle of a project. We use our unparalleled depth and breadth of resources to ensure practical program management solutions that meet today's project challenges.

”

Over the past three decades of AIC's history, we have completed projects in all sectors to a total value in excess of \$40 Billion.

The number of our executed projects and the number of our staff members continue to build on the reputation of being one of the most respected and reliable firms in the GCC, which is gained through our total and constant commitment to quality and client service.

The following pages showcase a sample of our project history featuring projects in the sectors of:

- Governmental & Corporate Facilities
- Real Estate
- Commercial
- Housing and urban
- Recreational, Hospitality and Sports
- Infrastructure & Transport
- Interior
- Mosques
- Healthcare
- Educational
- Industrial
- Oil & Gas
- Sustainability and Environmental
- Non-Process Buildings
- Blast Resistant Buildings





## Governmental & Corporate Projects

Our people are applying their technical expertise to projects of national significance. We are involved in the planning and design of government buildings and facilities. Our teams have drawn on their understanding of the latest technology and developed innovative approaches to offer our clients effective solutions to their challenges. We help the public sector to build communities that will thrive into the future. We not only provide insight into the big picture in sustainability, security and resilience but we also enable pragmatic action. Our teams work with clients to maximise the potential of every scheme, tight deadlines and budgets.

## Border Posts, UAE

AIC have designed and supervised numerous Border Posts Projects across UAE. The scope of work includes design and supervision of construction of the border Posts, all work within the project plot boundaries for construction including buildings and external work in accordance with the clients' requirements and operational demands.

**Client:** Presidential Court (DIWAN), MOPA, NCEMA  
**Location:** Multiple locations across UAE  
**Function:** Governmental  
**Service:** Design & Supervision  
**Area:** BUA: ~123,586 m<sup>2</sup>, Scope Area: ~6,114,000 m<sup>2</sup> (cumulative)



## Civil Defence HQ, UAE

Abu Dhabi Civil Defence HQ is located in Mohammed Bin Zayed City. Commissioned by Musanada, the project features offices spaces, and all civil defence departments under one roof.

**Client:** Musanada  
**Location:** MBZ - Abu Dhabi, UAE  
**Function:** Governmental  
**Service:** Design  
**Area:** B.U.A - 75,000 m<sup>2</sup>



## Al Mirfa Marine Management Centre, UAE

The designed center manages the Marawah Marine Biosphere Reserve, the Pearl Project, the Fisheries & logistics of marine wildlife surveys and monitoring activities. It includes main building, staff accommodation, kitchen, dining, and service blocks, shaded parking space for 38 cars, landscape, paved walkway and signage.

**Client:** Environment Agency AD  
**Location:** Abu Dhabi, UAE  
**Function:** Governmental  
**Service:** Design and Supervision  
**Area:** BUA: 3,793.36 m<sup>2</sup>



## Al Shahama / MBZ Majlis, UAE

The local Majlis at both MBZ & Al Shahama are to be used for national celebrations and as per the neighborhood requirements. Each majlis includes 3 event halls, dining hall, library, celebration plaza, and all the required supporting facilities.

**Client:** Trojan General Contracting  
**Location:** Alshahama, MBZ  
**Function:** Governmental  
**Service:** Design and Supervision  
**Area:** BUA: 1,840.83 m<sup>2</sup> and 1,718.17 m<sup>2</sup>





## Ministry of Labour Office, UAE

The Ministry of Labour Office is situated in Al Ain, UAE. Combining various facilities for both customers and staff, the two floor complex includes administration area, customer waiting and service area, offices and meeting facilities. AIC's role on the project was complete facilities management.

**Client:** Ministry of Public Works  
**Location:** Al Ain, UAE  
**Function:** Governmental  
**Service:** Facilities Management  
**Area:** 7,000 m<sup>2</sup>



## TAMM Centres, UAE

The 3 TAMM Centres located in the Western Region of Abu Dhabi ( Al Marfa'a / Ghayathi / Liwa) are integrated Government Services centres. The Centre provides a number of government and non-government services meeting resident's requirements and interests.

**Client:** Western Region Municipality  
**Location:** WR - Abu Dhabi, UAE  
**Function:** Governmental  
**Service:** Design & Supervision  
**Area:** 50,000 m<sup>2</sup> (per site)



## Al Ain Municipality Service Center, UAE

The Municipality provides customer services and support services for the completion and development of municipal services in Al Ain City and its districts. It plays a role in the strategic operations and includes office facilities, meeting room areas and public counter systems.

**Client:** Musanada  
**Location:** Al Ain, UAE  
**Function:** Governmental  
**Service:** Design, Supervision & Cost Management for Interior  
**Area:** 22,000 m<sup>2</sup>



## Al Wathba Municipality Center, UAE

The project is the provision of consultancy (Supervision) services for the construction of Office Building of Al Wathba Municipality Center, a light structure building in Al Wathba, Abu Dhabi.

**Client:** Abu Dhabi Municipality  
**Location:** Al Wathba South, Abu Dhabi  
**Function:** Governmental  
**Service:** Design and Supervision





## Seed Conservation Centre, UAE

This project is designed for the related flora complimenting UAE Plant Genetic Resource Center project. This is to achieve a complete record of floral of the UAE, entire collection of native flora of Abu Dhabi is collected and stored for use in research, restoration, landscaping, and seed production.

**Client:** Environment Agency Abu Dhabi (EAD)  
**Location:** Abu Dhabi, UAE  
**Function:** Governmental  
**Service:** Design & Supervision  
**Area:** 4,677 m<sup>2</sup>



## Municipality Centres, UAE

The project consists of three municipal centers in Mohammed Bin Zayed City (MBZ), Al Bahyah and Al Shawamekh, Abu Dhabi. The three buildings with landscape and parking areas follows a typical design with amendments required to suit the different site locations.

**Client:** ALDAR Properties PJSC  
**Location:** Abu Dhabi, UAE  
**Function:** Governmental  
**Service:** Design & Supervision  
**Area:** 19,800 m<sup>2</sup>



## Al Dhafra Landfill Building, UAE

The project comprises of office buildings for the staff (20 Numbers), administration buildings (14 Numbers), service building, masjid, kitchen and toilets etc, entry and exit gates of the facility, traffic management plans, rehabilitation / construction of internal roads and its benefits with an estimated road length of 2.13Km, and hard/soft land scape.

**Client:** Tadweer  
**Location:** Shanaeen, Abu Dhabi, UAE  
**Function:** Governmental  
**Service:** Design & Supervision  
**Area:** 1,217.8 m<sup>2</sup>





## AADC Regional Control Centre, UAE

The project accommodates Strategic Regional Control Centre (SRCC) for both the power and water network. The facilities of AADC inside the plot includes an ADMS building, stores, offices and rest areas.

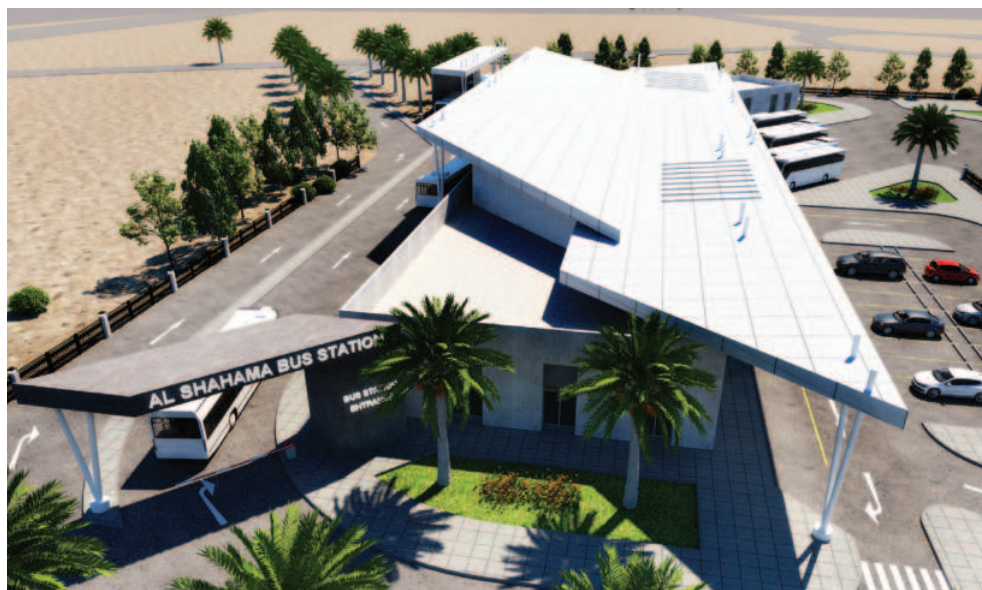
**Client:** Al Ain Distribution Company (AADC)  
**Location:** Al Ain, UAE  
**Function:** Governmental  
**Service:** Design & Supervision  
**Area:** 4,621 m<sup>2</sup>



## Al Shahama Bus Station, UAE

Department of Transport (DOT) strategic plan aims to provide a modern & improved Bus station in Al Shahama, Abu Dhabi. The project includes a concourse, tickets zone, staff areas, waiting areas, utilities and etc. The project shall include 4 DIDO / 5 DIRO stands as well as 15 bus layover parking, staff parking and car drop off area as well as bus washing and vacuum facility.

**Client:** Musanada  
**Location:** Al Shahama, Abu Dhabi, UAE  
**Function:** Governmental  
**Service:** Design Consultancy  
**Area:** 1,455.80 m<sup>2</sup>



## Animal Conservation Facility, UAE

The Animal Conservation Facility at Deleikha is located in Al Ain Area Plot P1, Abu Dhabi. It consists of veterinary clinic, administration building, guest house, 2 staff accommodation buildings, electrical service block and 2 pump rooms, guard room and vehicle storage. Scope also includes infrastructure and landscaping.

**Client:** Musanada  
**Location:** Abu Dhabi, UAE  
**Function:** Governmental  
**Service:** Supervision  
**Area:** 4,509 m<sup>2</sup>



## Abu Dhabi Bus Station, UAE

The Project was to develop / refurbish the historical Abu Dhabi Main Bus Station which had been constructed on 1983. The building is classified grad (A) at DCT. The project is aims to increase the functionality, hospitality and safety for all public transport in addition to improving overall appearance of the city.

**Client:** Musanada  
**Location:** Abu Dhabi, UAE  
**Function:** Governmental  
**Service:** Assessment, BIM & Design  
**Area:** BUA: 19,149.1 m<sup>2</sup>



## Forensic Evidence Centre, UAE

The building consists of Ground + 4 floors containing the departments of Administration, Evidences Archiving, Biology DNA Section, Chemistry & Toxicology, Fire Investigations, Circulation, and Service areas.

**Client:** Musanada  
**Location:** Abu Dhabi, UAE  
**Function:** Government  
**Service:** Design and Supervision  
**Area:** 6,083.8 m<sup>2</sup>



AIC

## Real Estate

AIC has an extensive track record in the residential sector. Our capability ranges from new build villa properties to high-specification apartment tower complexes.

We bring our understanding of how to maximise the value of a development site, while delivering commercially viable projects and appealing addresses to cities and communities in the GCC.

By offering a range of services from architecture to programme and project management through to construction delivery, we provide our clients with a bespoke offer that ensures maximum value without compromising on quality.

## Horizon Towers, UAE

The Towers located on the water front praised as a dynamic blend of residences and retail outlets at the ground floor. The design includes 39 floors consisting of 7 podiums, 31 residential floors with 1, 2 and 3 bedroom apartments, and one mechanical floor.

**Client:** TSL Properties LLC and Tamouh Investments L.L.C  
**Location:** Al Reem Island, Abu Dhabi, UAE  
**Function:** Residential / Commercial  
**Service:** Design & Supervision



## Maritime Development, UAE

The proposed project at the Break Water Abu Dhabi includes the construction of a covered marina, 55 floor tower with 2 basements, 2 podiums featuring a mall, a 5 star hotel and residential apartments. It emphasize a long-term, cohesive strategy maximizing the value derived from this important landmark project.

**Client:** National Invest Corporation  
**Location:** Break Water, Abu Dhabi, UAE  
**Function:** Mixed Use  
**Service:** Concept Design







## LIG Tower, UAE

The LIG tower in Abu Dhabi features 3 Basements, Ground Floor, 6 Podiums, a Recreational Area and 14 typical floors. The area also includes parking for 344 vehicles.

**Client:** LIG Real Estate  
**Location:** Abu Dhabi, UAE  
**Function:** Commercial  
**Service:** Design and Supervision  
**Area:** B.U.A - 31,000 m<sup>2</sup>



## The Crescent Towers, UAE

The proposed project is part of Al Reem Island development master plan. The 32 storey towers incorporate 1, 2 and 3 bedroom apartments, a common central facility including a swimming pool, recreational facilities and car parking facilities on the ground floor and basement. The complex also includes an area of private villas and high end facilities.

**Client:** Tamouh Investment LLC  
**Location:** Al Reem Island, Abu Dhabi, UAE  
**Function:** Integrated Mixed Residential Apartments  
**Service:** Full Design Build Tender Documentation  
**Area:** B.U.A. - 200,000 m<sup>2</sup>



## Al Rumaithi Office Tower, UAE

Situated in the Tourist Club in Abu Dhabi, the Al Rumaithi Office Tower comprises of 18 floors plus ground floor and mezzanine level, with each floor containing 4 residential apartments.

**Client:** ADCE  
**Location:** Abu Dhabi, UAE  
**Function:** Commercial / Residential  
**Service:** Design and Supervision  
**Area:** B.U.A. - 8,500 m<sup>2</sup>



## Commercial Building, AL RAHA BEACH, UAE

The scope of work includes construction, completion and maintenance of proposed private commercial development, mixed use building for Mr. Suhail Mohamed Faraj Fares Almazrouei located in Al Raha Beach west, Al Seef - Abu Dhabi. The project includes 2 basement car parking, ground floor as a commercial retail, mezzanine + 8 typical floors as a residential flats, and roof floor as jogging track.

**Client:** Abu Dhabi Commercial Engineering Services (ADCE)

**Location:** Abu Dhabi, UAE

**Role:** Lead Consultant

**Area:** 16,743 m<sup>2</sup>



## Emerald Gateway, UAE

The Mixed Use development at Abu Dhabi Gate comprises of ten floors plus the ground area combining office spaces, residential apartments and retails areas. Two designs were produced for the competition in collaboration with Arch-Tag.

**Client:** Emerald  
**Location:** Abu Dhabi Gate - Abu Dhabi, UAE  
**Function:** Mixed Use  
**Service:** Design Competition  
**Area:** B.U.A - 10,000 m<sup>2</sup> x 2



## Paragon Bay Mall, UAE

The Paragon Bay Mall is located on the Al Reem Island, Abu Dhabi. The development is positioned as a lifestyle centre with a unique range of speciality, daily and home shopping. AIC's role on the project is design coordination, project management & site supervision.

**Client:** Tamouh  
**Location:** Al Reem Island–Abu Dhabi, UAE  
**Function:** Recreation  
**Service:** Project Management & Site Supervision  
**Area:** 26,300 m<sup>2</sup>



## Commercial Building, AL RAHA BEACH, UAE

The scope of work of the Project includes construction, completion and maintenance of proposed private commercial development, mixed use building for Mr. Salham Mohamed Al Mazrouei & Heirs Daafoos Mohamed Salham Almazrouei located in Al Raha Beach west, Al Zeina - Abu Dhabi. The building has include 2 basement car parking, ground floor as a commercial retail, and mezzanine + 9 typical floors as a residential flats, roof floor as amenities (GYM and pool).

**Client:** Abu Dhabi Commercial Engineering Services (ADCE)  
**Location:** Abu Dhabi, UAE  
**Function:** Mixed Use  
**Service:** Design and Supervision  
**Area:** 16,465 m<sup>2</sup>





## Ali Al Neyadi Building, UAE

The project is comprised of 2 typical buildings having Ground+5+R, with retail use at ground floor and residential use from 1 to 5 floors. A total of 71 Nos. outdoor parking spaces have also been added in the project.

**Client:** Abu Dhabi Commercial Engineering Services (ADCE) / Mr. Ali Al Neyadi  
**Location:** Madinat Al Riyad, Abu Dhabi, UAE  
**Function:** Mixed Use  
**Service:** Design and Supervision  
**Area:** 4,190 m<sup>2</sup>



AIC

## Commercial

We have the experts, experience and knowledge to help our Clients produce great workspace, more economically and faster than ever before.

As occupiers' knowledge of and aspirations for high-quality commercial workplaces increases, so developers and investors are focusing their attention on what makes good design and how it can be achieved in a cost effective and sustainable way.

## Al Dhafrah Shops, UAE

The project has 170 number of plots, the final number of shops/stores to be confirmed later.  
The First floor is commercial according to the final lease agreement.

**Client:** ALDAR Properties PJSC  
**Location:** DRM/Abu Dhabi, UAE  
**Function:** Commercial  
**Service:** Design  
**Area:** 327 m<sup>2</sup> (each)



## Al Hayer Shops, Al Ain, UAE

The Al Ain Municipality plans to build 27 local buildings in Al Hayer. Buildings are of flexible use with retail at the ground floor level and retail/business/residential areas on the first-floor addition to the local shops the design of a mosque plot which is expected to be allocated as per requirement and other support shop essentials such as public toilets, police point, etc.

**Client:** ALDAR Properties PJSC  
**Location:** Al Ruwais - Abu Dhabi, UAE  
**Function:** Mixed use  
**Service:** Design  
**Area:** 14,276 m<sup>2</sup>



## Al Ain Boulevard, UAE

Al Ain Zoo was founded in 1968, ZAPIA is interested to design a series of improvements and creating a strategy to elevate Al Ain zoo existing previous entrance area and the street into a more vibrant and sustainable commercial corridor which is the Al Ain Zoo Boulevard. The scope of work includes Assessment, stakeholder engagement, market study, vision plan, and conceptual design for the boulevard.

**Client:** ZAPIA  
**Location:** Abu Dhabi, UAE  
**Function:** Mixed use  
**Service:** Design  
**Area:** 10,550 m<sup>2</sup>





## Housing and Urban

We use our expertise and abilities to create thriving, sustainable communities. Our dedication is seen by the careful planning and creation of urban and residential areas.

Our Housing & Urban Planning section is at the cutting edge of developing communities, from conceptualizing housing projects that respond to different needs to creating master plans that harmonize infrastructure, green spaces, and amenities.

## Al Ruwais Housing, Phase 3, UAE

The project is located in Abu Dhabi Western Region. Developed by ADNOC, the complex has its own shops, schools, banks, mosques, clinic and hospital, range of sporting and leisure amenities with all modern amenities set in beautifully landscaped grounds.

**Client:** ADNOC  
**Location:** Al Ruwais - Abu Dhabi, UAE  
**Function:** Residential  
**Service:** Master Plan, Infrastructure, Building  
**Area:** 12,000,000 m<sup>2</sup>



## Taxi Village, Musaffah, UAE

The project enhances the transport services for the locals and foreign visitors. It comprises of four prototype franchise operation complexes with mother plot, each with operational office, coordination centre, dining hall, drive-in taxi queue lanes, driver accommodation, vehicle maintenance, fuelling station, parking spaces, outdoor gaming facilities and a mosque.

**Client:** Department of Transport Abu Dhabi  
**Location:** Musaffah Industrial Zone, Abu Dhabi, UAE  
**Function:** Integrated Industrial One-Stop Hub  
**Service:** Concept Design & Master Plan Report  
**Area:** 203,000 m<sup>2</sup>





## Al Falah City, UAE

Al Falah, a master-planned community is located on the east side of the Abu Dhabi International Airport and Abu Dhabi - Dubai highway. It consists of five villages and offers 4,857 villas. Each of the villages is arranged around its own Village and Neighbourhood Centre, a mosque, a market square, and a mix of shops and offices.

**Client:** ALDAR Properties  
**Location:** Abu Dhabi, UAE  
**Function:** Residential  
**Service:** Infrastructure & Engineering Design  
**Area:** 12,000,000 m<sup>2</sup>



## Historical Heritage Ports, Red Sea S1, KSA

AIC was awarded the project of rehabilitation and development of the historical heritage ports in Al Wajh, Amlaj, Dibba, and Yanbou areas, Red sea by the Saudi Commission for Tourism and National Heritage Authority. The services provided by AIC were the conditional assessment, survey, re-development and urban design of the four heritage ports.

**Client:** Saudi Commission for Tourism and National Heritage  
**Location:** Al Wajh port, Dibba port, Amlaj port & Yanbou port, KSA  
**Function:** Mixed Use  
**Service:** Study and Urban Design





## Neima & Salamt Res. Complex, UAE

The Neima and Salamt Residential Complex consists of 2 zones. The Neima zone incorporated the construction and related infrastructure (Road, Sewage Network, Water Supply Network, Power Supply Network, Telephone Network and Substation Power Supply) for 38 Villas. The Salamt zone involved the same specification and services for an area of 13 villas.

**Client:** Musanada  
**Location:** Al Ain, UAE  
**Function:** Residential  
**Service:** Design, Supervision, Master Plan & Infrastructure



## Ajman Housing Project, UAE

The scope of work of the project includes redesigning 380 villas and supervision to develop the previously approved one. The project was done in coordination with clients engineering department on virgin island in Ajman, UAE. Altorath also designed the road networks and villas entrance levels, tendering, and Value Engineering studies to suit the low income people.

**Client:** Sheikh Zayed Housing Programme  
**Location:** Alraqayb-2 – Ajman, UAE  
**Function:** Residential  
**Service:** Design & Supervision  
**Area:** 103,125 m<sup>2</sup>



## Al Wathba Ranch, UAE

The ranch includes main majlis, horse riding area, groomer, swimming pool, separate kitchen and laundry, play court and related authority utilities rooms. The Site is located in Qasr Al Wathba South.

**Client:** Private  
**Location:** Qasr AlWathba South  
**Function:** Residential  
**Service:** Design Services, Permitting  
**Area:** 720.64 m<sup>2</sup>



## Private Villa, UAE

The project is G+1+Roof including main villa, service block, electrical room. The main villa includes 5 master bedrooms, guest room, maid room, majlis with its dining area, internal kitchen, services & family sitting and dining area, in addition to an outdoor dining area and the driver room.

**Client:** Private  
**Location:** Shakhbot City, Abu Dhabi, UAE  
**Function:** Residential  
**Service:** Design and Supervision including ID & landscape  
**Area:** 1116.96 m<sup>2</sup>



## Private Villa, UAE

The project is G+1+Roof including main villa, service block, electrical room. The main villa includes five master bedrooms, two guest rooms, two courtyards, greeting room, maid room, majlis seating with its dining area, gym, service kitchen, services, family room and dining area. It also includes an outdoor sitting area, shaded outdoor living area and terrace garden.

**Client:** Private  
**Location:** Shakhbot City, Abu Dhabi, UAE  
**Function:** Residential  
**Service:** Design and Supervision





## Private Villa, UAE

The project is G+1+Roof, including, main villa, service block, External Majlis and driver room. The main villa includes 3 master bedrooms, guest room, gym, playing room, private living, women majlis, guest dining, family living and internal kitchen.

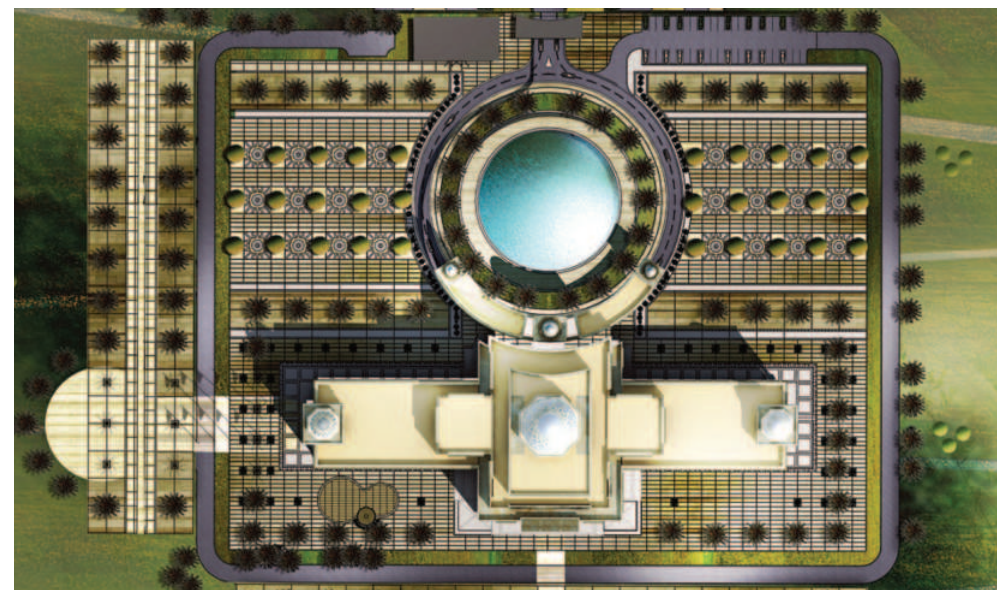
**Client:** Private  
**Location:** MZ, Al Dhafrah, UAE  
**Function:** Residential  
**Service:** Design Services & Permitting  
**Area:** 944 m<sup>2</sup>




## Private Palace, UAE

Located in Abu Dhabi this Private Palace project is designed in a traditional Arabic style featuring modern amenities. The area includes a main majlis and dining hall, a small majlis with catering and kitchen facilities, VIP suite and rooms as well as standard facilities and amenities.

**Client:** Private  
**Location:** Abu Dhabi, UAE  
**Function:** Residential  
**Service:** Design Competition  
**Area:** B.U.A. - 2,500 m<sup>2</sup>, Plot - 20,000 m<sup>2</sup>







## Recreational, Hospitality & Sports

Our Sports and Recreation specialists design through the eyes of the venue's users, always focusing on promoting human interaction and creating vibrant gathering places that build genuine connections.

We design these facilities to celebrate identity and inspire cultural changes. They also integrate high-tech systems and have flexibility to accommodate future needs.

## ADNOC Dist. Recreation Club, UAE

The recreation centre at Musaffah –Abu Dhabi provide services, facilities and recreation programs to promote health, wellness and activities parallel to work for the ADNOC Distribution members. It is based on metaphor architecture using the centralized design principal providing the symbolic form with natural light and ventilation.

**Client:** ADNOC Distribution  
**Location:** Musaffah –Abu Dhabi, UAE  
**Function:** Recreation  
**Service:** Design  
**Area:** 19,000 m<sup>2</sup>



# H. Sheikha Fatima B. Mubarak Park, UAE

Together with the Contractor, AIC was responsible to deliver complete design drawings for obtaining building permits and supervision of the H.H. Sheikha Fatima Bint Mubarak Park, one of the leading prestigious projects in 2018, located next to Corniche Road in Abu Dhabi city.

- Client:** Capital Investment L.L.C.
- Location:** Abu Dhabi UAE
- Function:** Recreational
- Service:** Design & Supervision (AOR)
- Area:** 46,000 m<sup>2</sup>



## MBZ Sports City Centre, UAE

The project is for the provision of supervision consultancy for a package consisting of 10 different projects at Al Ain Zoo District namely Koala Land, Gorillas Sanctuary, Sand Cat display and Nocturnal House Upgrade, New Sand Cat Breeding Facility, Petrol Station, Animal Rescue Center, Nature Reserve, Elephant Safari, Al Ain Zoo Headquarter and New Chimpanzee Park.

**Client:** ZAPIA  
**Location:** Al Ain, UAE  
**Function:** Animal Exhibits  
**Service:** Design and Supervision  
**Area:** 2,000 m<sup>2</sup> + 7000 Sq. External Exhibits & Landscape



# Al Ain Zoo, UAE

The project is for the provision of design and supervision consultancy for a package consisting of 10 different projects at Al Ain Zoo District namely Koala Land, Gorillas Sanctuary, Sand Cat display and Nocturnal House Upgrade, New Sand Cat Breeding Facility, Petrol Station, Animal Rescue Center, Nature Reserve, Elephant Safari, Al Ain Zoo Headquarter and New Chimpanzee Park.

- Client:** ZAPIA
- Location:** Al Ain, UAE
- Function:** Animal Exhibits
- Service:** Design and Supervision
- Area:** 2,000 m<sup>2</sup> + 7000 Sq. External Exhibits & Landscape







# Nature Reserve, AL AIN ZOO, UAE

Nature Reserve at Al Ain zoo aims to establish and enhance local wildlife and natural fauna and flora. It includes a range of buildings that includes administration, restaurant, multipurpose tent, lodges and VIP suites in addition to the animal holding facilities, shaded water ponds, and rainwater harvesting reservoirs as well as other wellness and recreational facilities.

- Client:** ZAPIA
- Location:** Al Ain, UAE
- Function:** Animal Exhibits
- Service:** Design and Supervision
- Area:** 2,000 m<sup>2</sup> + 7000 Sq. External Exhibits & Landscape



## Events Pavilion, AL AIN ZOO, UAE

The project aims to build an outdoor theater for holding events within Al Ain Zoo. The main components of the project are the Outdoor theater with required services overlooking an open courtyard. An open square with specific areas for market, food trucks and gift stalls with a capacity of at least 1500 people, fountains, children's play areas, and landscaping.

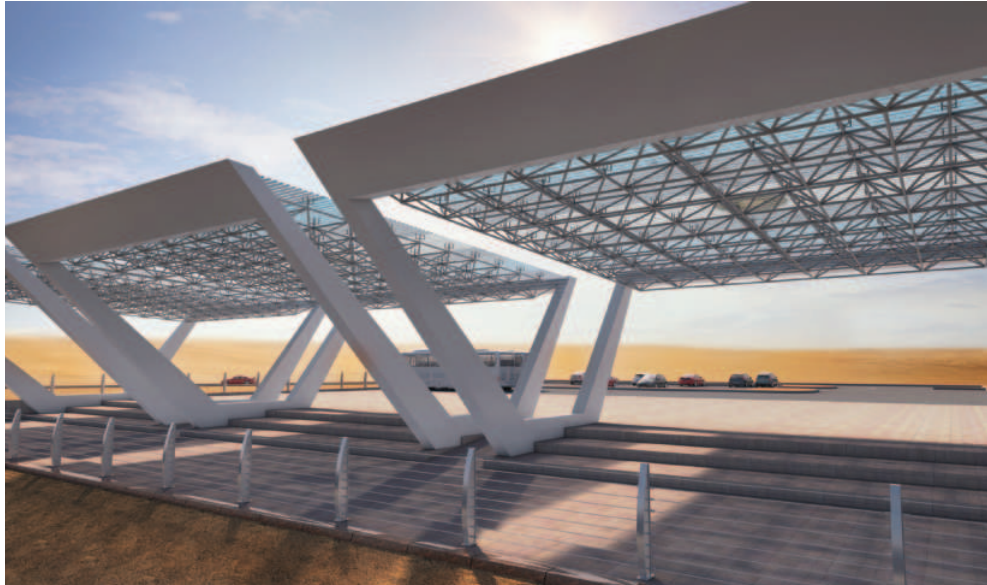
**Client:** ZAPIA  
**Location:** Al Ain, UAE  
**Function:** Animal Exhibits  
**Service:** Design and Supervision  
**Area:** 2,000 m<sup>2</sup> + 7000 Sq. External Exhibits & Landscape



# Shams Visitor Centre, UAE

The project manages the increasing number of visitors in SHAMS-1 power plant. It aims to modify and upgrade the fire truck house to serve as a visitor centre, build new fire truck and visitor sheds, and visitor platform areas with road access. The project aims to create an educational and attractive environment for the residents and visitors ranging from VIPs to school children.

- Client:** SHAMS Power Company
- Location:** Western Region –Abu Dhabi, UAE
- Function:** Recreation
- Service:** Design
- Area:** 4,200 m<sup>2</sup>



## Yas Island Centro Hotel, UAE

The Centro at Yas Island is a contemporary concept. It has an inspired philosophy that sets an unparalleled benchmark for the budget conscious business traveller. The 3-star Centro Hotel has 259 rooms spread over 6 floors. The hotel features 2 restaurants, a retail outlet and swimming pool. It is situated next door to the Rotana Yas Island Hotel.

**Client:** Rotana Hotels & Resorts  
**Location:** Yas Island, Abu Dhabi, UAE  
**Function:** Hospitality  
**Service:** Supervision



# Yas Island Rotana Hotel, UAE

The project is located in Yas Island, Abu Dhabi. The 4-star hotel consists of 308 rooms and 27 suites. The ground floor has ballroom, health spa, 6 restaurants and business facilities. It reflects the Rotana Hotel Groups quality of service, and Arabic design elements. AIC was involved in the construction and supervision including the Centro hotel of the Rotana Hotel Group.

- Client:** Rotana Hotels & Resorts
- Location:** Yas Island, Abu Dhabi, UAE
- Function:** Hospitality
- Service:** Supervision



## Ghantoot Stables, UAE

The 300 hectares Ghantoot Racing & Polo Club boasts world-class polo and equestrian facilities and is recognised as one of the most prestigious clubs of its kind in the world. AIC were commissioned for the design and supervision of 2 new buildings accommodating 51 separate stables including a service block and training yard.

**Client:** Ghantoot Racing & Polo Club  
**Location:** Ghantoot - Abu Dhabi, UAE  
**Function:** Sports & Recreation  
**Service:** Design & Supervision  
**Area:** B.U.A - 1,500 m<sup>2</sup>



# Al Wathba Camel Race Track, UAE

The Al Wathba Camel Race Track is situated about 45km east of Abu Dhabi on the Al Ain Road and is one of the UAE's biggest camel racing facilities. AIC's role included the design and supervision of the main grand stand and on site parking facilities. The project was innovative, functional and sensitive to local environmental condition.

- Client:** Musanada
- Location:** Abu Dhabi, UAE
- Function:** Sports & Recreation
- Service:** Design & Supervision
- Area:** B.U.A - 8,000 m<sup>2</sup>





## AESGC Facility, UAE

The Al Ain Equestrian, Shooting & Golf Club (AESGC) facility is a hospitality oriented destination in Al Ain. The Equestrian area includes the main club house, 168 concrete air-conditioned stables and 222 tented temporary stables, a main grandstand and show jumping area, horse pool and racetracks.

**Client:** AESGC  
**Location:** Al Ain, UAE  
**Function:** Sports & Recreation  
**Service:** Design & Supervision



# FBMA Gym Expansion, UAE

The project is an expansion for Ladies Club building. The Fatima Bint Mubarak Ladies Sports Academy project contains Large Gym Hall + 5 aerobic studios + Health club (Jacuzzi and sauna) in addition to large landscape area containing about 12 buildings, landscape (beach house deck) etc.

- Client:** Musanada
- Location:** Abu Dhabi, UAE
- Function:** Hospitality
- Service:** Supervision
- Area:** 5,000 m<sup>2</sup> (Gym) + 85,000 m<sup>2</sup> (Landscape)





AIC

## Interior Design

Great interior space has extraordinary effects on our wellness and productivity. AIC's design solutions use space, colour, materials, energy and light as tools to create healthy creative environments that enhance performance.

Our combined efforts of architectural, interior, acoustical, light and environmental design engineers produced unique interior designs for project as challenging as hotels and visitor centre museums.

## Al Wathba Ranch, UAE

The project is a Private Villa located in Abu Dhabi, UAE. The design and construction includes a residence with horse stable, riding area, playground, swimming pool, and numerous spaces for services such as kitchen and electrical room.

**Client:** Mr. Azza Al Kabi  
**Location:** Abu Dhabi, UAE  
**Function:** Residential  
**Service:** Design & Supervision  
**Area:** 710 m<sup>2</sup>



## SEED Conservation Centre, UAE

This project is designed for the related flora complimenting UAE Plant Genetic Resource Center project. The is to achieve a complete record of floral of the UAE, entire collection of native flora of AD is collected and stored for use in research, restoration, landscaping, and seed production.

**Client:** Environment Agency Abu Dhabi (EAD)  
**Location:** Abu Dhabi, UAE  
**Function:** Governmental  
**Service:** Design & Supervision  
**Area:** 4,677 m<sup>2</sup>





## AADC Regional Control Centre, UAE

The project accommodates Strategic Regional Control Centre (SRCC) for both the power and water network. The facilities of AADC inside the plot includes an ADMS building, stores, offices and rest areas.

**Client:** Al Ain Distribution Company (AADC)  
**Location:** Al Ain, UAE  
**Function:** Governmental  
**Service:** Design & Supervision  
**Area:** 4,621 m<sup>2</sup>





## Municipality Centres, UAE

The project consists of three municipal centers in Mohammed Bin Zayed City (MBZ), Al Bahyah and Al Shawamekh, Abu Dhabi. The three buildings with landscape and parking areas follows a typical design with amendments required to suit the different site locations.

**Client:** ALDAR Properties PJSC  
**Location:** Abu Dhabi, UAE  
**Function:** Governmental  
**Service:** Design & Supervision  
**Area:** 19,800 m<sup>2</sup>



## ADFSP Ghayathi School - Phase 09, UAE

This Project forms part of Phase 9 - Abu Dhabi Future School Program that has been launched by the Department of Education and Knowledge (ADEK) in the year 2009. The Future School Program has been delivered through many phases over the past nine years to meet the growing demand for efficient and sustainable education facilities.

**Client:** ADEK/Musanada  
**Location:** Al Dhafra, UAE  
**Function:** Education  
**Service:** Design  
**Area:** 25,547.90 m<sup>2</sup>



## ADFSP Al Shuaiba School - Phase 09, UAE

The Future School Program aims to update Abu Dhabi's educational system to meet growing academic and educational requirements and enable innovative methods of teaching. It was designed for Co-EDU, having 64 classrooms.

**Client:** ADEK/Musanada  
**Location:** Al Ain, UAE  
**Function:** Education  
**Service:** Design  
**Capacity:** 1920 Students



## Al Mirfa Marine Management Centre, UAE

The designed center manages the Marawah Marine Biosphere Reserve, the Pearl Project, the Fisheries & logistics of marine wildlife surveys and monitoring activities. It includes main building, staff accommodation, kitchen, dining, and service blocks with shaded parking space, landscape, paved walkway and signage.

**Client:** Environment Agency AD  
**Location:** Abu Dhabi, UAE  
**Function:** Governmental  
**Service:** Design and Supervision  
**Area:** 3,793.36 m<sup>2</sup>



## Al Sila Marine Management Centre, UAE

The Center is for the daily management for Al Yasat Protected area and Fisheries management. It includes administration center, staff accommodation, rangers and marine wildlife monitoring units, dining areas, and office spaces. It also includes shaded parking, landscape, paved walkway and signage.

**Client:** Environment Agency AD  
**Location:** Abu Dhabi, UAE  
**Function:** Governmental  
**Service:** Design and Supervision  
**Area:** 2,006 m<sup>2</sup>



## Forensic Evidence Centre, UAE

The building consists of Ground + 4 floors containing the departments of Administration, Evidences Archiving, Biology DNA Section, Chemistry & Toxicology, Fire Investigations, Circulation, and Service areas.

**Client:** Musanada  
**Location:** Abu Dhabi, UAE  
**Function:** Government  
**Service:** Design and Supervision  
**Area:** 6,083.8 m<sup>2</sup>





## Elephant Safari, Al Ain Zoo, UAE

The Elephant Safari project is located within Al Ain Zoo Plot. The program is broken down into Elephant Village, Elephant Safari, Lion Safari, and Elephant Back of House.

**Client:** Zoo & Aquarium, Public Institution in Al Ain  
**Location:** Al Ain, UAE  
**Service:** Design  
**Area:** 329,704.2 m<sup>2</sup>





## Shams Visiting Centre, UAE

The visitor center project with standalone operation manages the increasing number of visitors in SHAMS-1 Power plant. The centre is inside a fire truck building after its full renovation and related additions to the existing building.

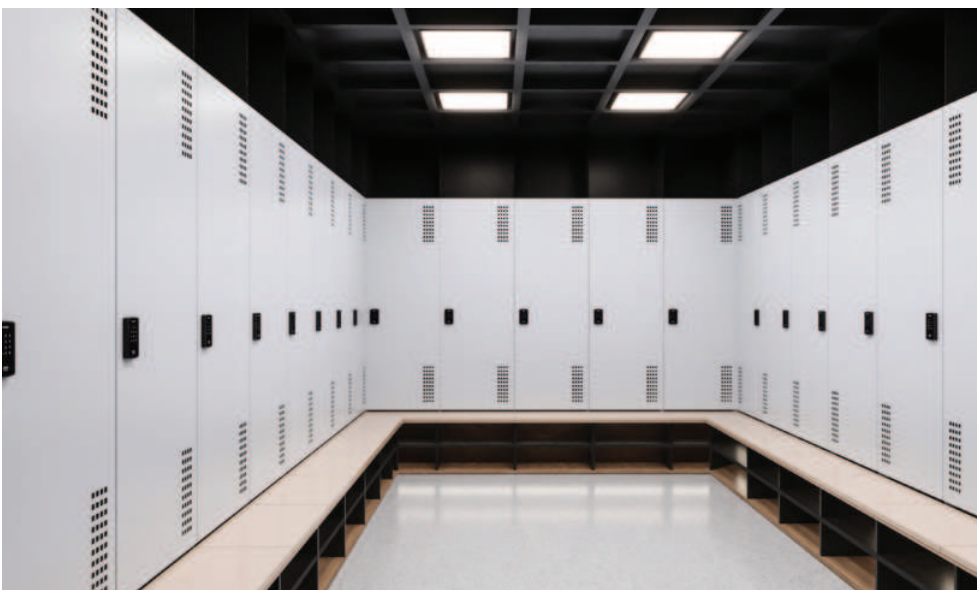
**Client:** Shams Power Company  
**Location:** Abu Dhabi, UAE  
**Service:** Design and Supervision  
**Area:** 683.85 m<sup>2</sup>



## ADNOC Rehabilitation Workshop, UAE

The project is the refurbishment & extension of an existing workshop for mechanical, electrical & instruments repair and an annex store for storing all the tools & spare parts. The building accommodates staff facilities, meeting room, washrooms, pantry, lockers.

**Client:** ADNOC  
**Location:** Abu Dhabi, UAE  
**Service:** Design  
**Area:** 712 m<sup>2</sup>



## ADSSC Offices, UAE

The project is the interior fit out for Abu Dhabi Swerage Services Company, located in Al Ain, Abu Dhabi. The scope of work includes design and supervision services for ADSSC offices.

**Client:** ADSSC  
**Location:** Al Ain, Abu Dhabi, UAE  
**Service:** Design and Supervision  
**Area:** 7000 m<sup>2</sup>



## Mazmado Restaurant, Alqana UAE

This project is the interior design and supervision of the Mazmado Restaurant, located in Alqana, Abu Dhabi, as per the requirements of the client.

**Client:** Mazmado  
**Location:** Abu Dhabi, UAE  
**Function:** Restaurant  
**Service:** Design & Supervision





AIC

## Mosques

AIC had a great experience in the design and construction supervision of different types and styles of mosque designs with several architectural schools.

Our mosques are evident in providing a wide range of engineering studies, design and construction management services around GCC and Africa. With formalized enhanced methods for the design flexibility, circulation, the efficiency of usage and additional trendy design aspects which totally served the mosques holy functions.

Being a 100% UAE National Company we understand the culture and region and we constantly explore ways to balance tradition with new demands of religious practice.

## Sheikh Hazza Mosque, UAE

The project is situated in the Tourist Club area of Abu Dhabi. The Sheikh Hazza Mosque is one of the largest in the region. The building is built on a plot of 22,500 m<sup>2</sup> and can hold a total of 11,000 worshippers. The complex includes Prayer Halls for both Males and Females, ablution areas, kitchens and catering area, and accommodation for Imam and Moazen.

**Client:** Private  
**Location:** Abu Dhabi, UAE  
**Function:** Mosque  
**Service:** Design and Supervision  
**Area:** 10,000 m<sup>2</sup>







## Bany yas Mosque, UAE

The prototype mosque feature 3 traditional styles with the capacity to hold 450 Male worshippers and 50 Female worshippers. The area includes traditional amenities and facilities with the same lay-out being reflected on each of the sites in Abu Dhabi.

**Client:** AWQAF  
**Location:** Abu Dhabi, UAE  
**Function:** Mosque  
**Service:** Design and Supervision  
**Area:** 900 m<sup>2</sup>



## Al Danah Mosque, UAE

The project is located in Abu Dhabi, United Arab Emirates. The scope of work includes MEP, ESTIDAMA, Lighting, Water features, and infrastructure. It also includes all work inside and outside the project boundaries addressing external aspects while strictly adhering to the owner's specifications and operational necessities.

**Client:** ALDAR Properties PJSC  
**Location:** Abu Dhabi, UAE  
**Function:** Mosque  
**Service:** MEP, ESTIDAMA, Lighting, Water Feature and Infrastructure Design  
**Area:** 1,982 m<sup>2</sup>



## WTC Mosque, UAE

The project is for ALDAR Properties in Abu Dhabi, UAE. The scope of work includes MEP, ESTIDAMA, Lighting, Water Feature and Infrastructure Design, and all work inside and outside the project boundaries for construction in accordance with the requirements and demands.

**Client:** ALDAR Properties PJSC  
**Location:** Abu Dhabi, UAE  
**Function:** Mosque  
**Service:** MEP, ESTIDAMA, Lighting, Water Feature and Infrastructure Design  
**Area:** 2,349 m<sup>2</sup>



## Abu Said Mosque, UAE

The Abu Said Mosque in Al Marfa'a Abu Dhabi caters for a capacity of 1520 Male worshippers and 213 Female worshippers. The area includes the main Prayer Hall, ablution area and accommodation for Imam and Moazen.

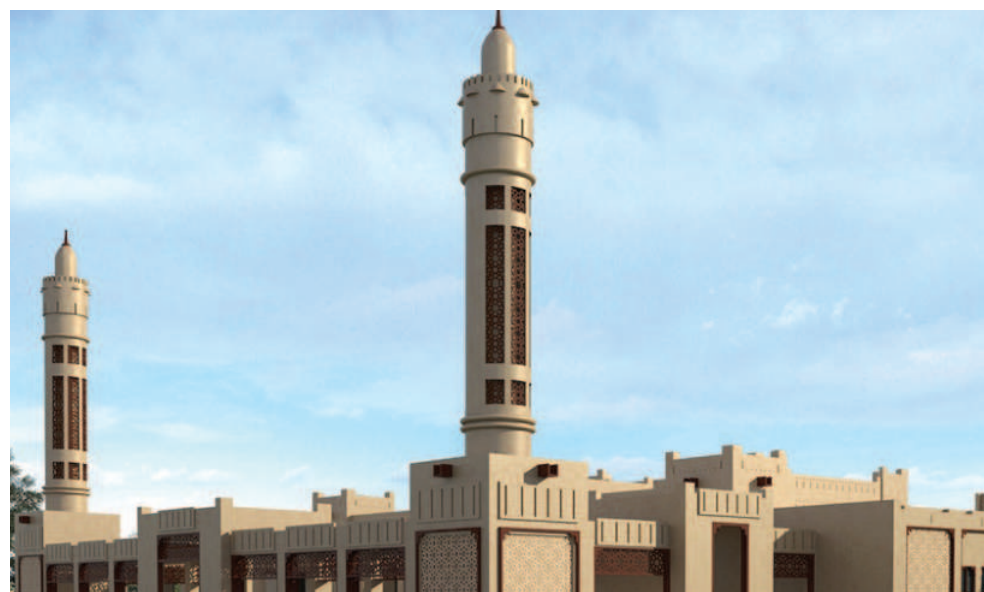
**Client:** G.A. of Islamic Affairs  
**Location:** Al Marfa'a - Abu Dhabi, UAE  
**Function:** Mosque  
**Service:** Design  
**Area:** 3,300 m<sup>2</sup>



## Al Falah Mosque, UAE

The scope of work includes all work within the project plot boundaries for construction including buildings and external work in accordance with the owner's requirements and operational demands.

**Client:** AWQAF  
**Location:** Abu Dhabi, UAE  
**Function:** Mosque  
**Service:** Design  
**Area:** 1040 m<sup>2</sup>



## Prototype Mosque, UAE

The prototype of the mosque is designed for a site in Abu Dhabi, UAE. Multiple iterations were proposed by keeping in mind the site constraints and environmental factors. The scope includes all work within the plot boundaries in accordance with the client's requirements and demands.

**Client:** Musanada  
**Location:** Abu Dhabi, UAE  
**Function:** Mosque  
**Service:** Design  
**Area:** 862.1 m<sup>2</sup>



## Al Maqtaa Mosque, UAE

The scope of work includes all work within the project plot boundaries for construction including buildings and external work in accordance with the owner's requirements and operational demands

**Client:** Engineering Office of H.H. Sheikh Mansour Bin Zayed – EOM.  
**Location:** Abu Dhabi, UAE  
**Function:** Mosque  
**Service:** Arch. and Str. Peer design review, MEP, ESTIDAMA & Approvals, Sprv. & PMC.  
**Area:** 1,010 m<sup>2</sup> (Mosque) + 1,263 m<sup>2</sup> (Majlis)



AIC

## Healthcare

Through our broad understanding of the healthcare environment, we have the expertise to ensure patients, clinicians and administrators benefit from well-designed facilities.

New technologies, medical advances and changing demographics are driving massive change in models of care. At AIC, a sustainable approach to healthcare means designing solutions that anticipate future needs and support strong long-term development for public and private sector providers.

We work in partnership with healthcare providers, funders, clinicians, architects and contractors to deliver world-class facilities and transformative management programmes.



## Corniche Hospital, UAE

The Corniche Hospital is located in downtown Abu Dhabi. AIC's involvement included full facilities management services, medical equipment maintenance and MEP maintenance in the renovation and expansion to the existing Neonatal intensive care unit, Urgent Care, Ambulatory Services as well as the renovation and expansion of the Out-patient Department.

**Client:** Abu Dhabi Health Authority  
**Location:** Abu Dhabi, UAE  
**Function:** Healthcare  
**Service:** Facilities Management



## Al Rahba Hospital, UAE

The expansion of the Al Rahba Hospital caters to the healthcare needs of the local community. The hospital is located near E11 highway connecting Dubai and Abu Dhabi. Its emergency department serves over 200 visitors per day. Licensed for 163 beds, the hospital is currently operating 116 beds, and recently expanded its Neonatal Intensive Care Unit.

**Client:** Healthcare Authority  
**Location:** Rahba, Abu Dhabi, UAE  
**Function:** Healthcare  
**Service:** Design & Supervision



## HAAD 90% Inspection Projects

AIC provides inspection as part of its services, it is dedicated to providing effective HAAD inspection services in collaboration with healthcare facilities. The procedure for conducting a 90% HAAD Inspection Service involves several steps. AIC's specialized team for Health Projects, including a Project Manager, Architect Engineer, MEP Engineers, and a Biomedical Engineer, handles tasks such as reviewing HAAD drawings, conducting onsite inspections, and compiling feedback for HAAD. Subsequent inspections can be conducted as necessary. The process begins with healthcare facilities providing essential documents like approved reports, drawings, and testing reports for MEP systems and medical equipment. A comprehensive approach ensures adherence to HAAD inspection guidelines, covering architectural, health planning, MEP building services, and medical equipment aspects.

PROJECTS	LOCATION	DATE
01- One Day Surgery Center	Abu Dhabi	2023
02- Burjeel Royal Hospital	Al Ain	2023
03- Mediclinic Hospital	Abu Dhabi	2023
04- Ain Al Khaleej Hospital	Abu Dhabi	2023
05- Specialized Hospital	Al Ain	2023
06- Elyzyee Hospital	Abu Dhabi	2023
07- General Hospital (Cath Lab), Ain Al Khaleej Hospital	Abu Dhabi	2023
08- General Hospital - EME, Al Ain	Abu Dhabi	2023
09- General Hospital (7 ICU Beds)	Abu Dhabi	2023
10- Day Surgery Centre, Royal Medical Centre One day Surgery L.L.C	Abu Dhabi	2023
11- General Hospital (6 NICU Beds)	Abu Dhabi	2023
12- Burjeel Hospital, General Hospital (Waiting Area, Observation Beds)	Abu Dhabi	2023
13- Rehabilitation Hospital (Second Floor), Al Ain, Czech Rehabilitation Hospital	Abu Dhabi	2023
14- One Day Surgery (Day Surgery Area), Burjeel Medical Centre, L.L.C	Abu Dhabi	2023
15- Change of Internal Plan (only clouded area) - General Hospital	Abu Dhabi	2021
16- 90% Inspection - One Day Centre, Al Ain	Abu Dhabi	2019
17- 90% Inspection - Addition of Speciality Bed - General Hospital, Al Ain	Abu Dhabi	2019
18- Change of Internal Plan - Basement and First Floor - General Hospital, Al Ain	Abu Dhabi	2019
19- General Hospital (Emergency at Ground Floor)	Abu Dhabi	2019
20- One Day Surgery Centre in Villa (Full Building)	Abu Dhabi	2019
21- General Hospital - Urgent Care Department	Abu Dhabi	2019
22- Al Marfa'a Hospital	Al Dhafrah	1999

AIC

## Educational

AIC has provided solutions that have saved costs, improved educational achievement, challenged conventional thinking and surpassed expectations. By understanding purpose, performance and future use, we bring enduring value to educational environments.

The above practice has comprised the series of several types of educational facilities projects in GCC region starting from all stages of primary and secondary schools, colleges, universities, even specialized training institutes such as the Petroleum institute, ADNOC Distribution Training Centre and ZADCO MD Training Centre, all included several types of class rooms, workshop, practical training ground and simulators for heavy equipment and machinery.

## Ain Al Fayda School, Ph-9 (ADFSP), UAE

The Future School Program seeks to modernize Abu Dhabi's educational system to meet rising curriculum and educational requirements and enable new teaching techniques. It was designed for Co-EDU, with 70 classrooms, 8772.92 square meters of parking, 224.80 square meters of service building, and 124.60 square meters of pump space.

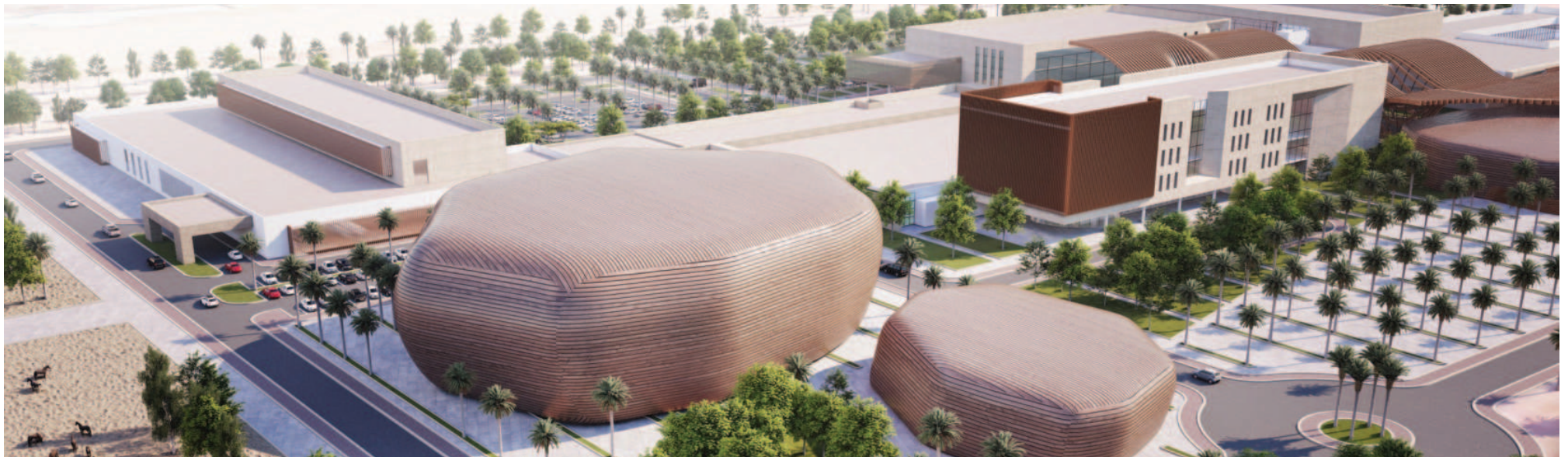
**Client:** ADEK/Musanada  
**Location:** Al Ain, UAE  
**Function:** Education  
**Service:** Design  
**Capacity:** 1,660 Students

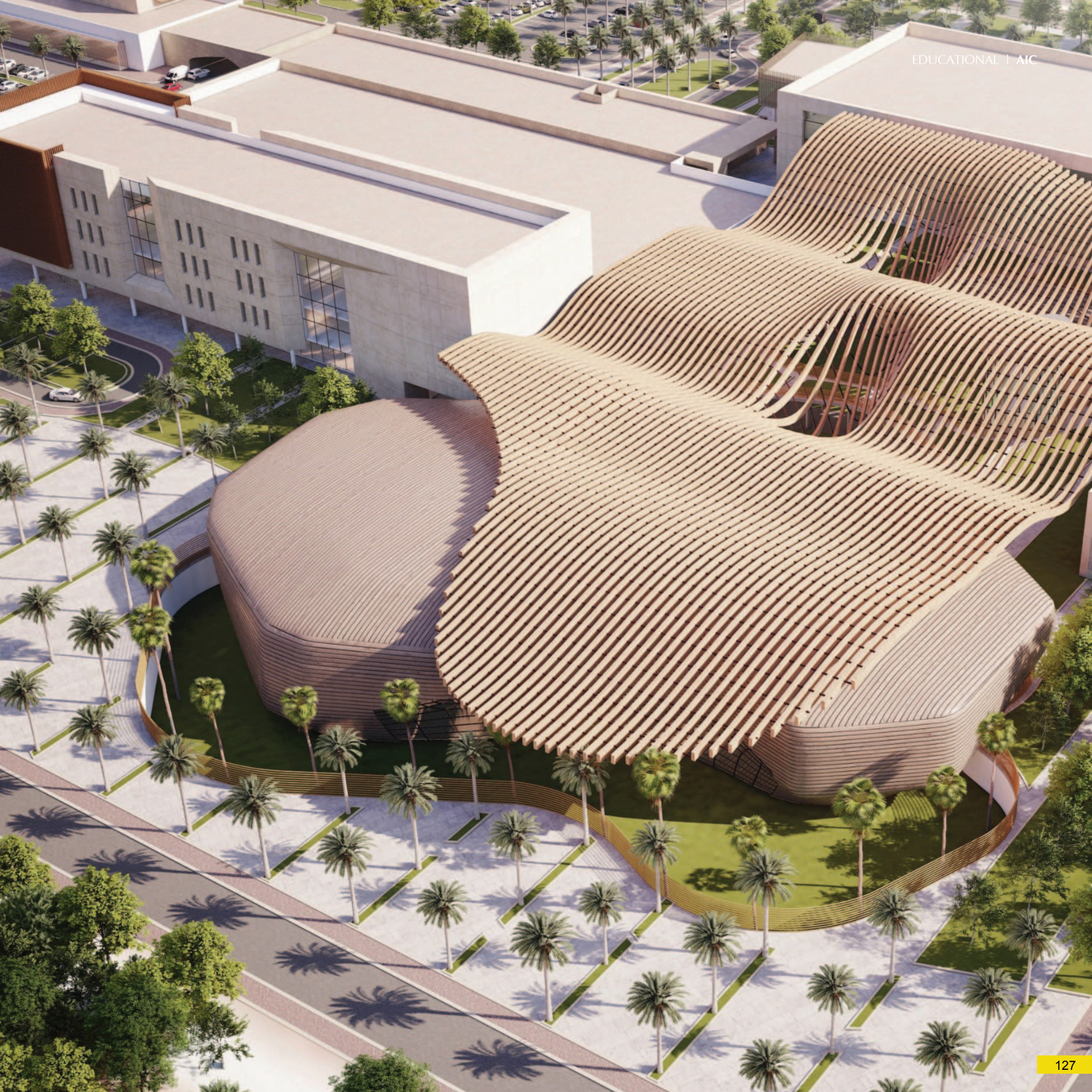


## UAEU Falaj Hazaa College, UAE

The UAEU Falaj Hazaa College of Veterinary and Animal science masterplan proposes new, and renovating/redesigning of the existing buildings. The proposed plan includes the Academic and Research blocks, Clinic Lecture Theatres, Small & large Animal Clinics, Imaging Facility and Cancer Treatment Center, Diagnostic Lab, Museum, Ancillary Facilities, and Parking Areas.

**Client:** UAE University  
**Location:** Al Ain, UAE  
**Function:** Education  
**Service:** Design  
**Area:** 97,187 m<sup>2</sup>





## Ghayathi School (ADFSP), Phase-9, UAE

This Project forms part of Phase 9 - Abu Dhabi Future School Program that has been launched by the Department of Education and Knowledge (ADEK) in the year 2009. The Future School Program has been delivered through many phases over the past nine years to meet the growing demand for efficient and sustainable education facilities.

**Client:** ADEK/Musanada  
**Location:** Al Dhafra, UAE  
**Function:** Education  
**Service:** Design  
**Area:** 25,547.90 m<sup>2</sup>





## Al Shuaiba School (ADFSP), Phase-9, UAE

The project is a educational facility for Co-EDU, with 64 classrooms, a 199.45 m<sup>2</sup> service building, and a 171.92 m<sup>2</sup> pump room. Its is part of the Future School Program that aims to update Abu Dhabi's educational system to meet growing academic and educational requirements and enable innovative methods of teaching.

**Client:** ADEK/Musanada  
**Location:** Al Ain, UAE  
**Function:** Education  
**Service:** Design  
**Capacity:** 1,920 Students



## Al Dhaher School, Phase-9, (ADFSP), UAE

The Future School Program aims to develop the educational infrastructure in Abu Dhabi to keep up with the increasing educational and curriculum standards and accommodate modern teaching methods. It is designed for Co-EDU containing 84 classes.

**Client:** ADEK  
**Location:** Abu Dhabi, UAE  
**Function:** Education  
**Service:** Design  
**Capacity:** 2,280 Students



## South Al Shamkha School, (ADFSP), UAE

The School at South Al Shamkha consists of ground, first, and second floors with 130 classrooms, administrative suites, teacher's offices, gathering areas, laboratories, cafeteria, theatre, music rooms, indoor and outdoor playgrounds, numerous green and service areas.

**Client:** ADEK  
**Location:** Abu Dhabi, UAE  
**Function:** Education  
**Service:** Design and Supervision  
**Capacity:** 3,100 Students



## Riyad City School (ADFSP), UAE

The project is designed to meet the needs of students and educators by considering space allocation, classroom layout, accessibility, safety measures, technological integration, and environmental sustainability. It is designed for Co-EDU, containing 72 classes, service building 258.55 sqm, and pumps room of 175.12 sqm.

**Client:** ADEK/Musanada  
**Location:** Abu Dhabi, UAE  
**Function:** Education  
**Service:** Design & Supervision  
**Capacity:** 2,160 Students



## Al Rahba School, Phase-7, (ADFSP), UAE

The Future School Program is aimed at updating Abu Dhabi's educational system to meet growing academic and educational standards as well as incorporate innovative methods of teaching. The Al Rahba School at Phase-7 is designed for boys and is priced at a total value of 150 million AED.

**Client:** ADEK  
**Location:** Abu Dhabi, UAE  
**Function:** Education  
**Service:** Supervision  
**Capacity:** 1,800 Students



## Baynounah Inst. of Science & Tech., UAE

The facility in the Western Region Abu Dhabi provides a hands-on industry driven approach using the latest equipment in it's well-equipped laboratories and workshops. Guided by local industry needs tailoring coursed and training programmes to meet the needs of the local industries and support Emiratization.

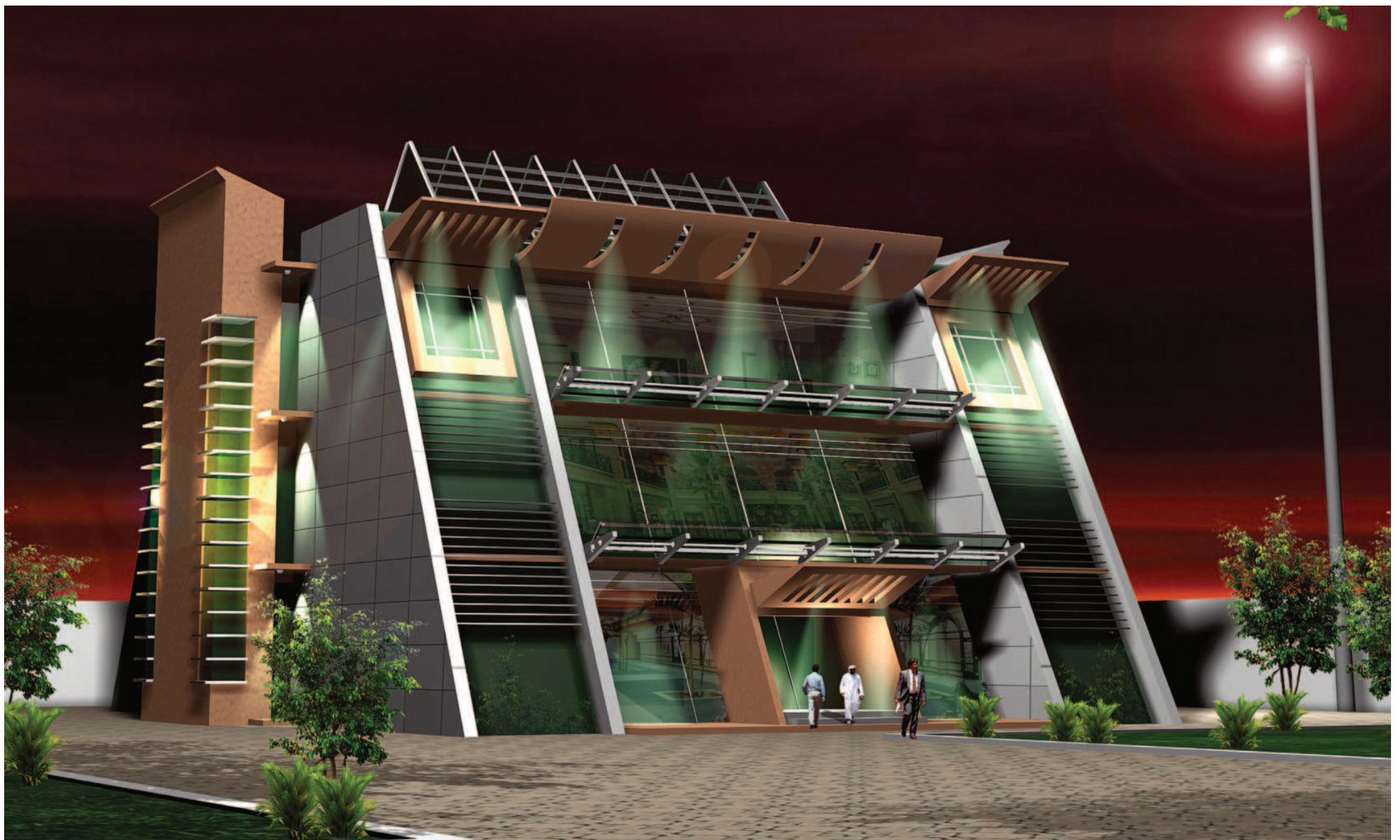
**Client:** ADVENTI  
**Location:** Abu Dhabi, UAE  
**Function:** Education  
**Service:** Design & Supervision  
**Area:** 1,600 m<sup>2</sup>



## H.H Sh. Zayed Int. Academy, UAE

The Abu Dhabi Fund for Developments commissioned the design competition for the Design of teacher accommodation for the Sheikh Zayed International Academy. The design features a 2 storey apartment block with a ground floor.

**Client:** Abu Dhabi Fund for Development  
**Location:** Islamabad, Pakistan  
**Function:** Residential  
**Service:** Design  
**Area:** B.U.A. - 1,500 m<sup>2</sup>



AIC

## Industrial

The industrial sector is an area where AIC's expertise can influence not only the performance of an industrial facility, but also the performance of the operation the new building is intended to support, helping our clients to successfully meet their own commercial targets.

Working closely alongside our clients, we develop bespoke industrial processing buildings that respond to specific operational needs. We factor in local legislative, geographical and environmental factors as we design sustainable, flexible and cost efficient buildings that can be built and commissioned speedily



## Al Foah Packhouse, UAE

Al Foah Farm is operated by Silal Fresh Operations. Located in Al Ain City, this facility plays a vital role in the overall supply chain and in supporting the local farming industry. The facility has been transferred to Silal with a plan to convert the farm to Fresh Produce Farm for premium crops.

**Client:** Silal Food and Technologies  
**Location:** Al Ain, UAE  
**Function:** Industrial  
**Service:** Supervision  
**Area:** 14,000 m<sup>2</sup>



## Maintenance & Inspection Complex, UAE

The Maintenance and Inspection Complex is located in Al Ain. Within the complex is an extended registration area, a prayer hall and a vehicle inspection centre. AIC's involvement in a design and supervision role completed the extension to the main registration building and renovation of the inspection area.

**Client:** Emirates Transport  
**Location:** Al Ain, UAE  
**Function:** Industrial  
**Service:** Design & Supervision  
**Area:** 2,200 m<sup>2</sup>



## WR Slaughterhouse Complex, UAE

Located in 3 Cities in WR Region (Madinat Zayed - Ghayathi - Al Marfa'a). The complex contain Slaughterhouse Buildings, Admin, Veterinary Facilities, Masjid, Staff Accommodation and Facilities and a Meat and Fruit Vegetable Market. The modern facility has the capacity to service 2000 Sheep, 200 Cows and 20 Camels per day.

**Client:** Western Region Municipality  
**Location:** 3 Cities - Western Region, UAE  
**Function:** Food Industry  
**Service:** Design, Supervision, Master Plan  
**Area:** BUA -2,800 m<sup>2</sup>



## Slaughterhouse Complex, UAE

The Slaughterhouse complexes are in 4 locations (Al Ain, Al Foa'a, Ain Alfydha and Salamat). Each contain a main slaughterhouse with a capacity of 500 sheep, 30 camels and 20 cattle. In addition to the slaughterhouse the site will include a mosque, substation and staff accommodation.

**Client:** Al Ain Municipality  
**Location:** Al Ain, UAE  
**Function:** Food Industry  
**Service:** Design & Supervision



## Central Slaughter Complex, OMAN

The Central Slaughter House Complex in Oman is one the biggest in the region. The area includes, Sheep and Camel Pens, Staff Accommodation, an Administration Building, Cafeteria Building, Examination Building, and the main Slaughter Building.

**Client:** Muscat Municipality  
**Location:** Muscat, Oman  
**Function:** Food Industry  
**Service:** Design



## Animal Rescue Centre, AL AIN ZOO, UAE

The Animal Rescue Center at Al Ain zoo comprises six zones with external open spaces, designed to suit the requirements of different animals. The Center also comprises service areas and air conditioned hosting rooms with automatic water supply system and feeding allies, giving a sustainable, secured and comfortable environment for each animal.

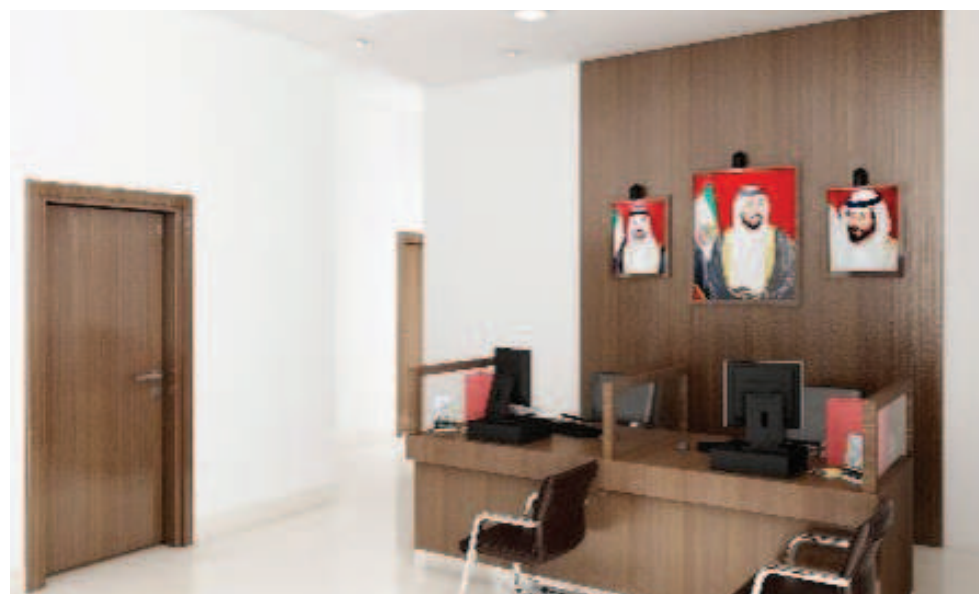
**Client:** Musanada  
**Location:** Al Ain, UAE  
**Function:** Animal Rescue  
**Service:** Design & Supervision  
**Area:** 9,377 m<sup>2</sup>



## Al Foaa Police Warehouses, UAE

The project is to design the five warehouses with related amenities in Abu Dhabi / Al Rahba Ajban area for Tawazun. The project has been constructed.

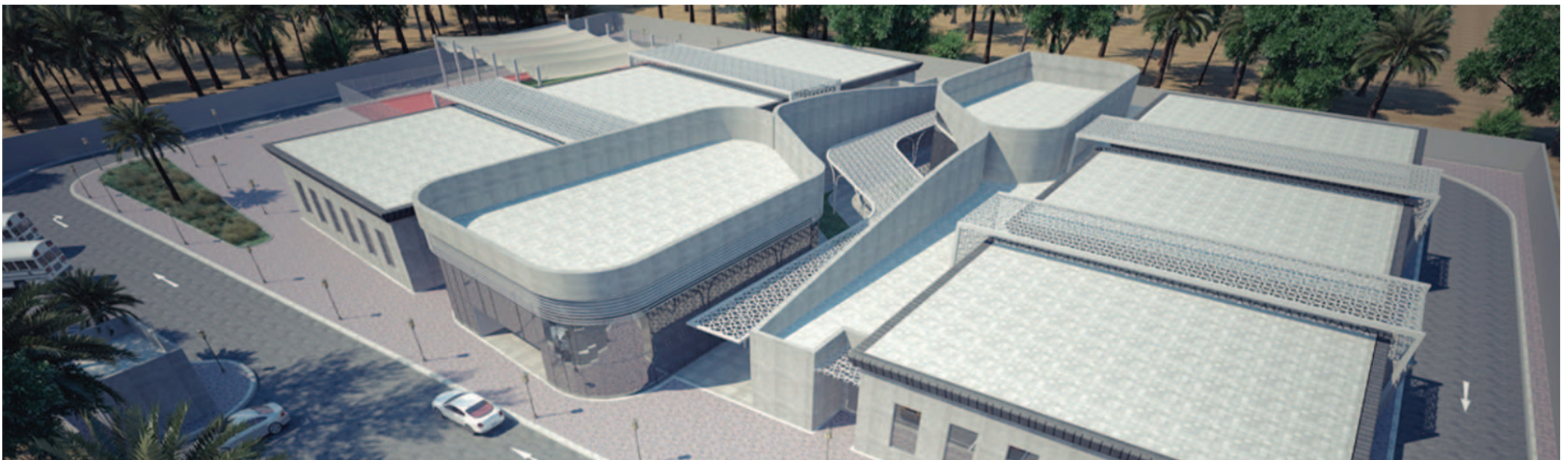
**Client:** Tawazun  
**Location:** Abu Dhabi, UAE  
**Function:** Industrial  
**Service:** Design and Supervision  
**Area:** 5,170 m<sup>2</sup>



## Al Mahmey Factory, UAE

The project aims to cater special needs of the people of determination. Located at Baniyas North, Abu Dhabi, it is designed as per the vision of Zayed Higher Organization for People of Determination. It provides advanced services in creating an environment that aspires towards the effectiveness of community.

**Client:** Musanada  
**Location:** Abu Dhabi, UAE  
**Function:** Industrial  
**Service:** Design  
**Area:** 4000 m<sup>2</sup>

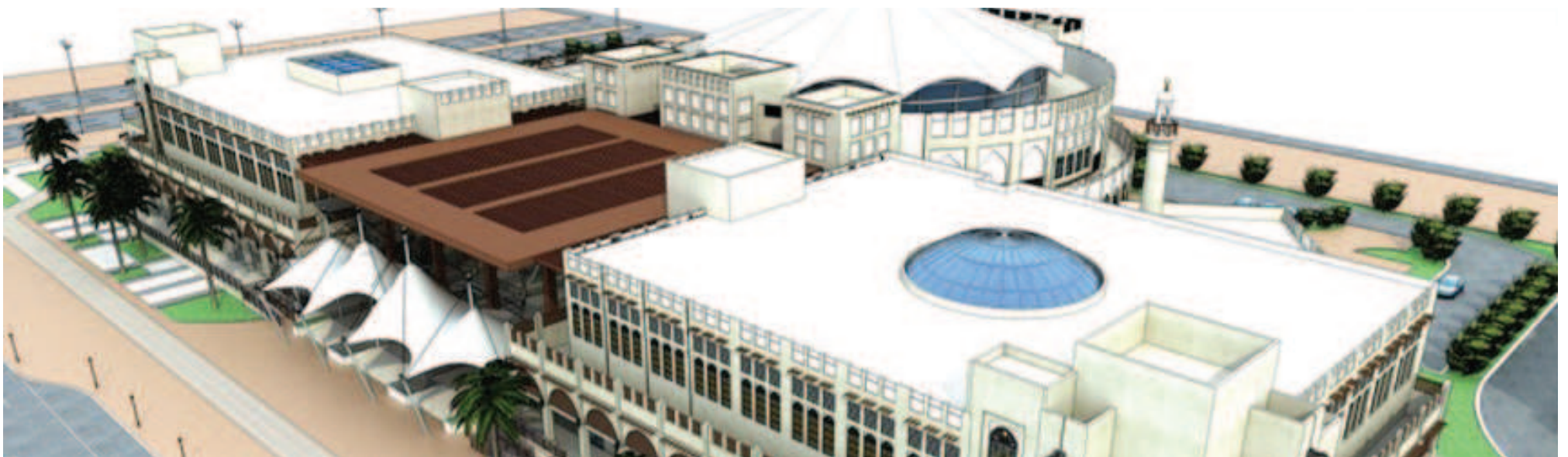




## Qatar Slaughterhouse, QATAR

The Qatar Slaughterhouse building consists of the main building, Staff Accommodation, Mosque, treatment plant with a capacity of 2000 sheep / 100 cow / 100 camel per day.

**Client:** Hassad Food  
**Location:** Qatar  
**Function:** Industrial  
**Service:** Design  
**Area:** 4000 m<sup>2</sup>





## Oil and Gas Buildings

We highlight a specific focus on Oil & Gas buildings in our portfolio, where compliance, safety, and accuracy are important.

Our dedication to excellence in Oil & Gas building involves an integrated approach that guarantees, efficiency, and following industry top practices.

## ADNOC Vehicle Inspection Centres, UAE

The prototype design comprises of police offices, meeting rooms, male and female customer halls, vehicle inspection lanes, ADNOC staff offices, kiosk for cashiers, car repair, offices for insurance companies, and a cafeteria. It was designed to achieve the Estidama 2-star Pearl rating in compliance to the requirements of AD Municipality and Urban Planning Council (UPC).

**Client:** ADNOC Distribution  
**Location:** Various Locations, UAE  
**Function:** Fuel Petrol Station  
**Service:** Design and Supervision  
**Area:** 2,900 m<sup>2</sup> (per site)



## ADNOC Service Filling Stations, UAE

AIC was entrusted as the main design consultant to carry out the design and preparation of complete engineering design documents for the construction of various types of Filling Stations facilities at 125 locations in UAE. The design of the Filling Stations are consistent with the prototype basis to reflect ADNOC Distributions retail identity.

**Client:** ADNOC Distribution  
**Location:** 125 Locations, in UAE  
**Function:** Fuel petrol station  
**Service:** Design and Supervision  
**Area:** 3,000 m<sup>2</sup> - 60,000 m<sup>2</sup>



## SASCO Petrol Station, KSA

The project is located in Saudi Arabia. The scope of services include Architectural, Structural, Infrastructure, MEP, and Quantity Survey. The stations aims to reduce traffic at existing service stations offering a simple and convenient fuelling experience.

**Client:** SASCO  
**Location:** Dhalm Area, KSA  
**Function:** Fuel petrol station  
**Service:** Supervision  
**Area:** 2500 m<sup>2</sup>



## ADNOC Xpress Linear Petrol Station, UAE

ADNOC Xpress is a new type of station offering a simple and convenient fuelling-only experience, the new stations aim to reduce traffic at existing service stations while ensuring maximum flexibility for customers.

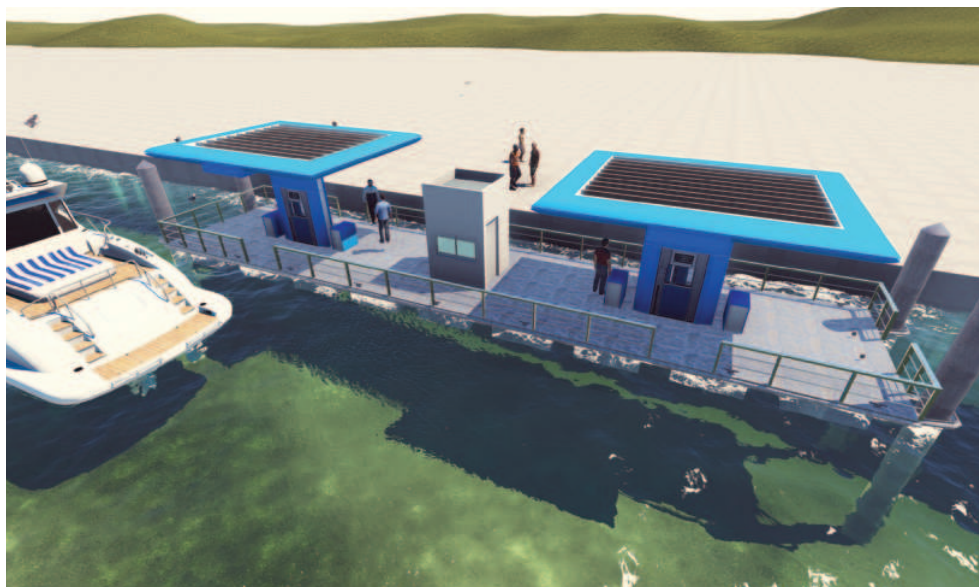
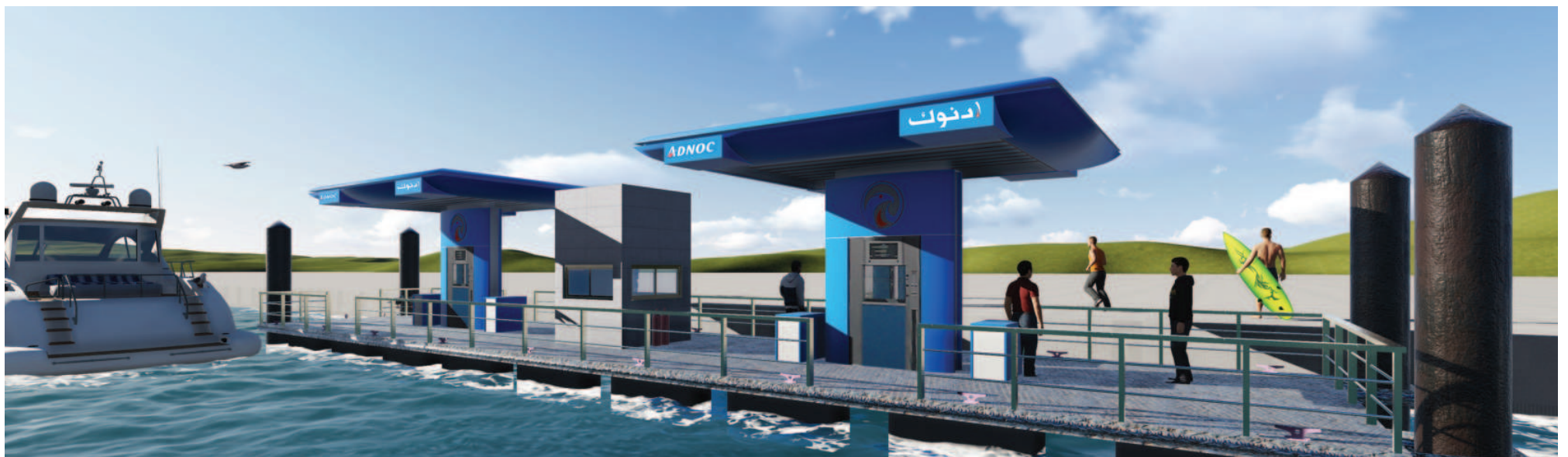
**Client:** ADNOC Distribution  
**Location:** 12 locations in Abu Dhabi  
**Function:** Fuel petrol station  
**Service:** Design Services  
**Area:** 600 - 800 m<sup>2</sup>



## ADNOC Marine Service Station, UAE

The new range of service stations offers both marine and inland services. Marine service stations features a wide range of modern facilities to ensure quality and convenience to boat owners and motorists. It also includes an ADNOC Oasis convenience store and a number of shops for lease.

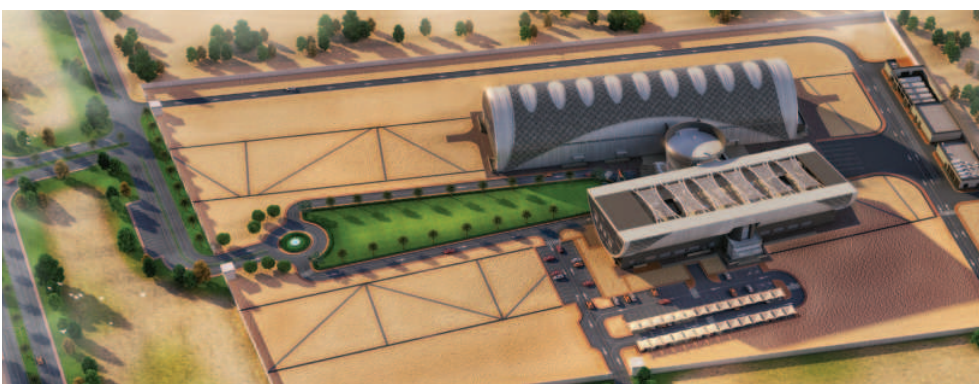
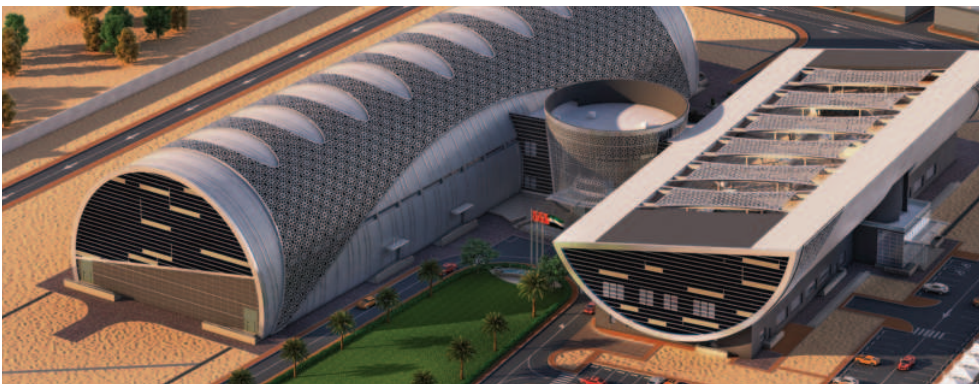
**Client:** ADNOC Distribution  
**Location:** 6 locations (Abu Dhabi(3), RAK(1), Al Dhafra(1), UAQ(1))  
**Function:** Fuel Marine Service Station  
**Service:** Design Services  
**Area:** 750 - 800 m<sup>2</sup>



## AD National Library and Lab. ADNCLL

Abu Dhabi National Core Library and Laboratory (ADNCLL) is state-of-the-art property in terms of design, equipment, and operational procedures. It stores and tests “Core Samples” that are brought from fields across the country. It is targeted to cater for the current demand and continue to be efficient for at least five decades.

**Client:** Abu Dhabi Company for Onshore Petroleum Operations Ltd. (ADCO)  
**Location:** Al Shamkha City, Abu Dhabi  
**Function:** Education  
**Service:** Design Consultancy Service  
**Area:** 24,001.65 m<sup>2</sup>





## ENOC Filling Station, UAE

The station is located on Erq El Heliw street at Green Mubazzarah-2, Al Ain, adjacent to the tourism area, i.e. Green Mubazzarah lake, Ain Al Faida, Wadi Adventure, Jebel Hafeet and Al Ain Zoo, etc. It includes building, filling station, car wash, service building, and other administration and facilities.

**Client:** Emirates National Oil Company Limited (ENOC) LLC  
**Location:** Al Ain, UAE  
**Function:** Fuel Petrol and Service Station  
**Service:** Design and Supervision  
**Area:** 1,975 m<sup>2</sup>





## Sustainability and Environmental

AIC is extremely sensitive for its role in building an environment which instead of depleting the earth resources to the one that balances with nature. We start from within, and our staff are highly sensitive to every thought they put in the design process making sure not to lose sight to the consequences their decisions can make on the environment. We strive hard to provide our clients with best sustainable solution designing and delivering innovative, aesthetically inspiring and energy efficient solutions.

AIC's innovative approach to sustainable and environment consulting enables clients to achieve their sustainable business and corporate responsibility aspirations. A wealth of technical expertise at AIC enables clients to incorporate sustainability into their strategies, projects and operation.

## Min. of Justice and Federal Courts, UAE

The project is located at Khalifa City A, Abu Dhabi is developed by the Emirates Real Estate Corporation for the AD Government. The complex is an energy efficient building having achieved 28% energy savings and 35% improvement in envelope performance without compromising on project cost and aesthetics.

**Client:** Emirates Real Estate Corporation  
**Location:** Khalifa City A, Abu Dhabi  
**Function:** Government  
**Service:** Estidama PBRS, Design and Construction, Rating – 2 Pearls – PQP Service  
**Area:** 43,000 m<sup>2</sup>



## Saadiyat Police Station, UAE

Saadiyat Police Station located in Saadiyat Beach District is a spectrum of hotel and resort destinations attracting visitors to the cultural and mixed-use facilities. The project is divided into three main section which consist of Main administration building, jail, and accommodation.

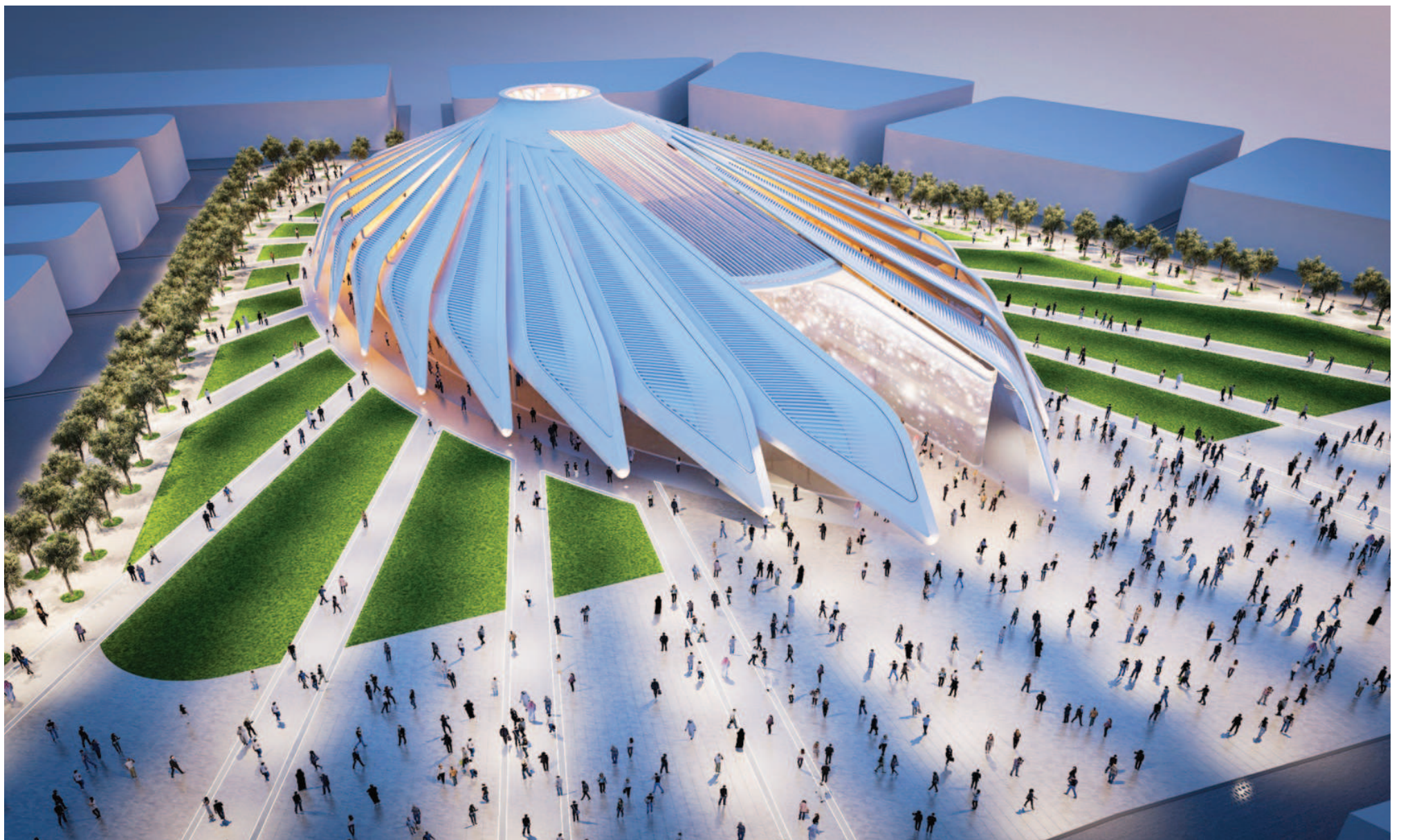
**Client:** TDIC  
**Location:** Saadiyat Island, Abu Dhabi  
**Function:** Government  
**Service:** Estidama PBRs, Construction, Rating – 2 Pearls – PQP Service  
**Area:** 10,400 m<sup>2</sup>



## UAE Pavilion – EXPO 2020, Dubai, UAE

The concept by the architect Santiago Calatrava is inspired by a falcon of flight was chosen the winning design for the UAE pavilion at Expo 2020 in Dubai. The UAE Pavilion built on a 15,000 m<sup>2</sup> site facing Al Wasl Plaza at the center of the 200-hectare exhibition zone. It will have exhibition areas, an auditorium, food and drinks outlets and special visitor lounges.

**Client:** WME Consultants  
**Location:** Dubai, UAE  
**Function:** Government  
**Service:** Waste Management Plan  
**Area:** 15,000 m<sup>2</sup>



AIC

## Non-Process Buildings

AIC has undertaken significant Non-Process Projects across various locations, encompassing infrastructure development, renewable energy initiatives, investments in technological advancements, and community-focused activities. These endeavors are aimed at supporting environmental conservation and fostering economic growth, in alignment with the client's commitment to innovation, sustainability, and corporate social responsibility.

## Borouge Administration Building, UAE

Borouge is a leading provider of innovative, value creating plastics solutions. A joint venture between the Abu Dhabi National Oil Company (ADNOC) and Austria based Borealis. The administration building is a two story development featuring typical office space, meeting areas and administration departments.

**Client:** Borouge  
**Location:** Al Ruwais Industrial Area, Al Dhafra, UAE  
**Function:** Oil and Gas  
**Service:** Design  
**Area:** 6,000 m<sup>2</sup>



## Al Hosn Shah Gas, UAE

The Shah Gas Non Processing Buildings project is located in the Shah Field approximately 100 km south of the existing GASCO Habshan facility. All buildings were designed as Blast Resilient structures with detailed services complying with GASCO Design General Specification. The project was prepared to achieve the SILVER grade ratings for LEED (US Green Building Council).

**Client:** Abu Dhabi Gas Development Company Limited (SHAH-GAS)  
**Location:** Al Dhafra, UAE  
**Function:** Non-Process Complex  
**Service:** Architecture  
**Area:** 41,460 m<sup>2</sup>





## ADNOC Dev. of Existing Beach, UAE

ADNOC aims to develop the existing beach at Ruwais through rehabilitation of the existing Beach Club and Boat Marina. It creates a recognized recreational destination which is sustainable, unique and provides appropriate developments adhering to the project site conditions.

**Client:** Abu Dhabi National Oil Company (ADNOC)  
**Location:** Ruwais, Abu Dhabi, UAE  
**Function:** Recreation  
**Service:** Design  
**Area:** 63,300 m<sup>2</sup>



## ADNOC Training Center, UAE

The site is located in Mussafah Area, Abu Dhabi. The project includes training halls, workshops, auditorium, administration offices, library, study rooms, accommodation, cafeteria, prayer halls, recreation areas, kitchen, dining hall, laundry, stores, etc.

**Client:** ADNOC  
**Location:** Abu Dhabi, UAE  
**Function:** Education  
**Service:** Supervision  
**Area:** 10,504 m<sup>2</sup>



## ZADCO Training Center, UAE

The project is a training centre with multi-story building consisting of workshops and amenities with all external utilities like roads, sewers, potable water, utility air, car parks, power and safety requirements.

**Client:** ZADCO  
**Location:** Zirku Island, Al Dhafra, UAE  
**Function:** Education  
**Service:** Design  
**Area:** 3,009 m<sup>2</sup>



## Habshan 5 – Industrial Area, UAE

The project at Habshan 5 Area in Al Dhafra contains multiple buildings that includes a management building, restaurant and technical Building, laboratory, masjid, maintenance workshop, warehouse, chemical / lube oil shed, car wash & workshop, chiller yard, substations, fire station / training and main gatehouse. The project has been constructed.

**Client:** GASCO  
**Location:** Al Dhafra, UAE  
**Function:** Non-Process Building Complex  
**Service:** Design  
**Area:** 44,6736.24 m<sup>2</sup>



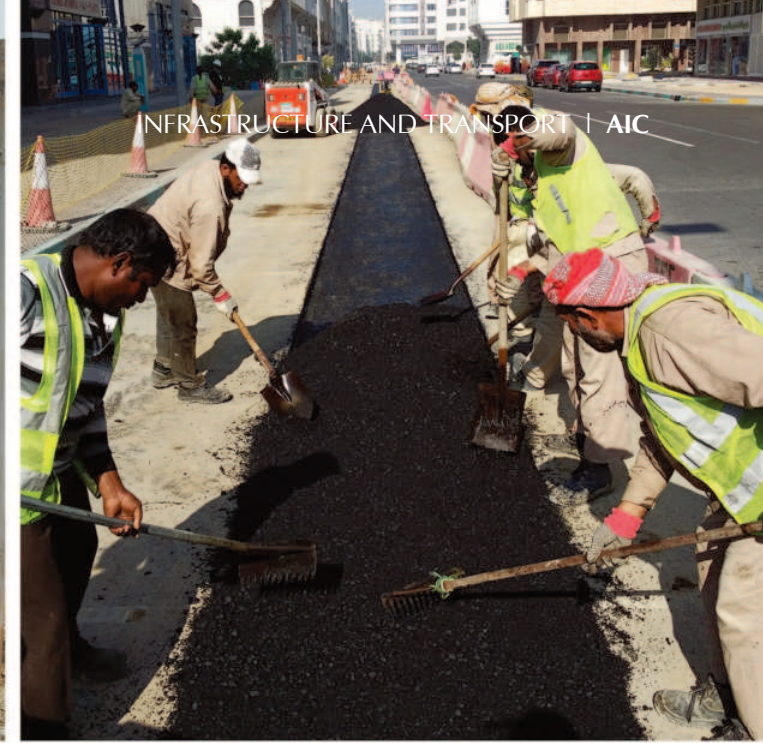




## Infrastructure & Transport

In the 21st Century, an integrated approach to the planning and management of transport and infrastructure is key to enabling clients achieve sustainable development. From conception to operation, AIC helps clients provide safe, efficient and cost-effective transport systems that deliver real social, economic and environmental benefits to the community.

AIC offers a multidisciplinary approach to projects, drawing on specialist from other sectors to ensure the success of every project we run. And with company services spanning the range of all civil engineering disciplines, AIC provides its infrastructure and transport clients with every service they need for a successful project of any size.



## Design of Roads & Infrastructure, UAE

The scope of the projects was to provide design services from concept to detailed design stage, obtaining authorities and stakeholder approvals, tendering stage services, post tender services. For Internal roads, storm water drainage, street lighting, water supply, power distribution, irrigation network, and landscape / streetscape.

**Client:** WRM  
**Location:** Western Region, UAE  
**Function:** Infrastructure  
**Service:** Design  
**Area:** 500,000 m<sup>2</sup>

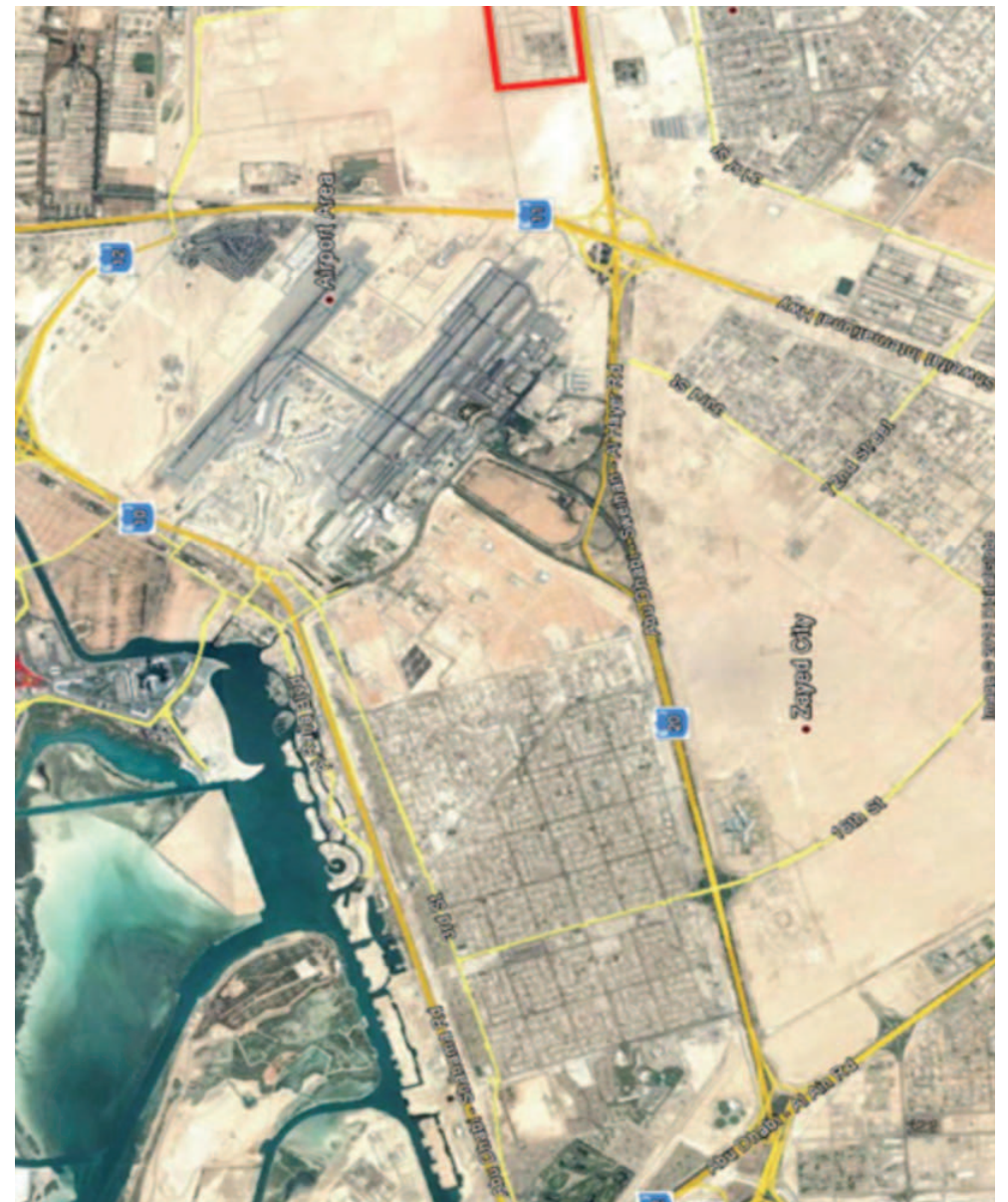




## Al Falah Sector FA-05, UAE

Design Consultancy Services for infrastructure works from concept design till post tender stage for the development of Al Falah Sector FA-05. The infrastructure design work includes, internal roads, sewerage networks, storm water drainage, street lighting, water supply, power distribution, irrigation network, soft landscape, etc.

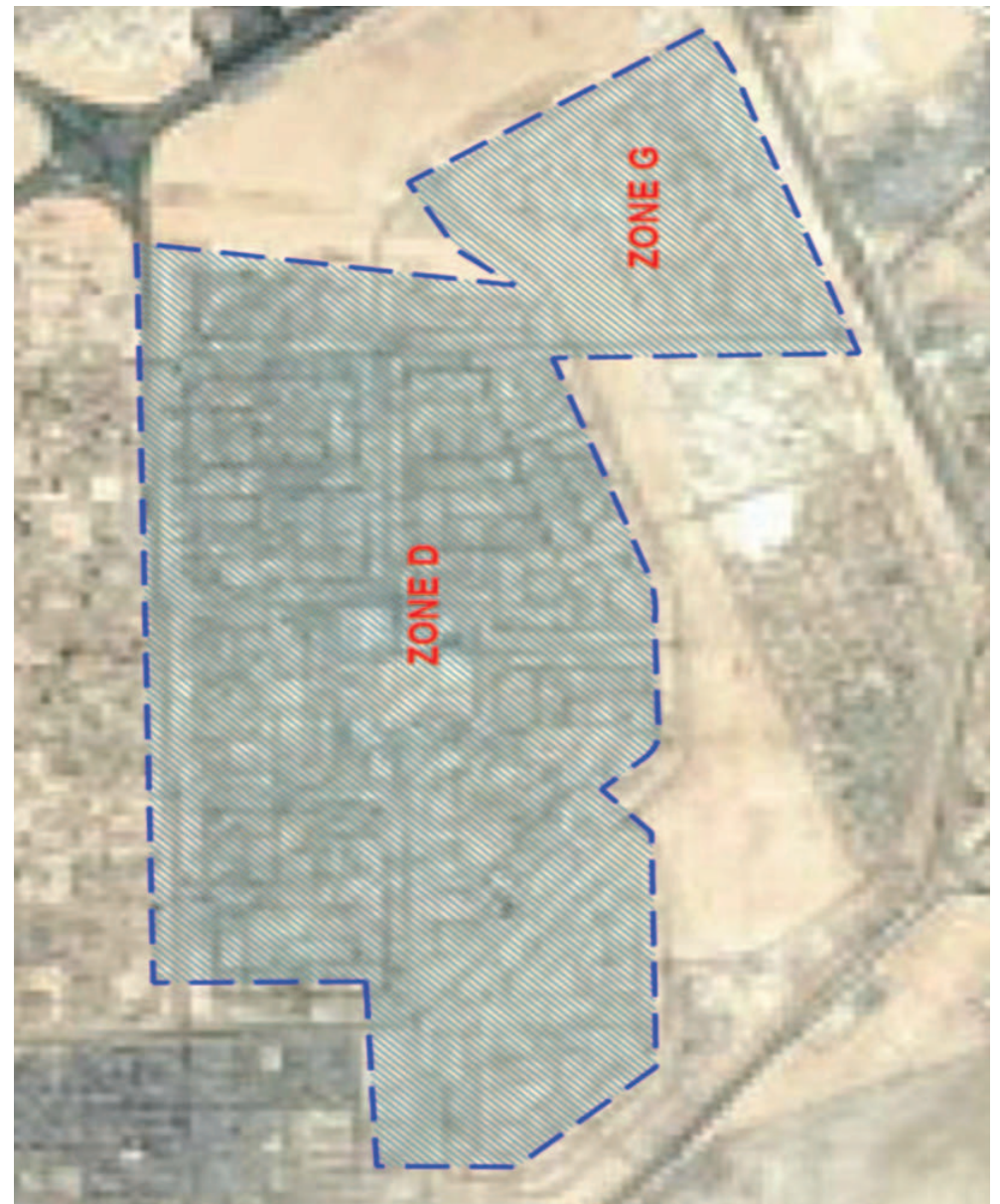
**Client:** MUSANADA  
**Location:** Al Falah  
**Function:** Infrastructure  
**Service:** Design  
**Area:** 220 ha



## Design Services for MBZ (Zone D&G), UAE

The objective of the project is to design a professional package leading to an efficient and safe roads network, parking, storm water drainage and utilities networks to complement the final master plan objectives for the development of Zones D & G (Sectors Z20, Z21, Z22, Z23, Z24, Z26, Z27, Z32, Z33 and Z34).

**Client:** MUSANADA  
**Location:** Mohammed Bin Zayed, UAE  
**Function:** Infrastructure  
**Service:** Design  
**Area:** 1026 ha



## Reinstatement of Road Net. Assets, UAE

The project is the management & supervision of the reinstatement works for roadway assets, reporting the construction activities which might have negative impacts on any of the assets owned by M/s. ADM, initial survey (GIS) and creating new permitting system.

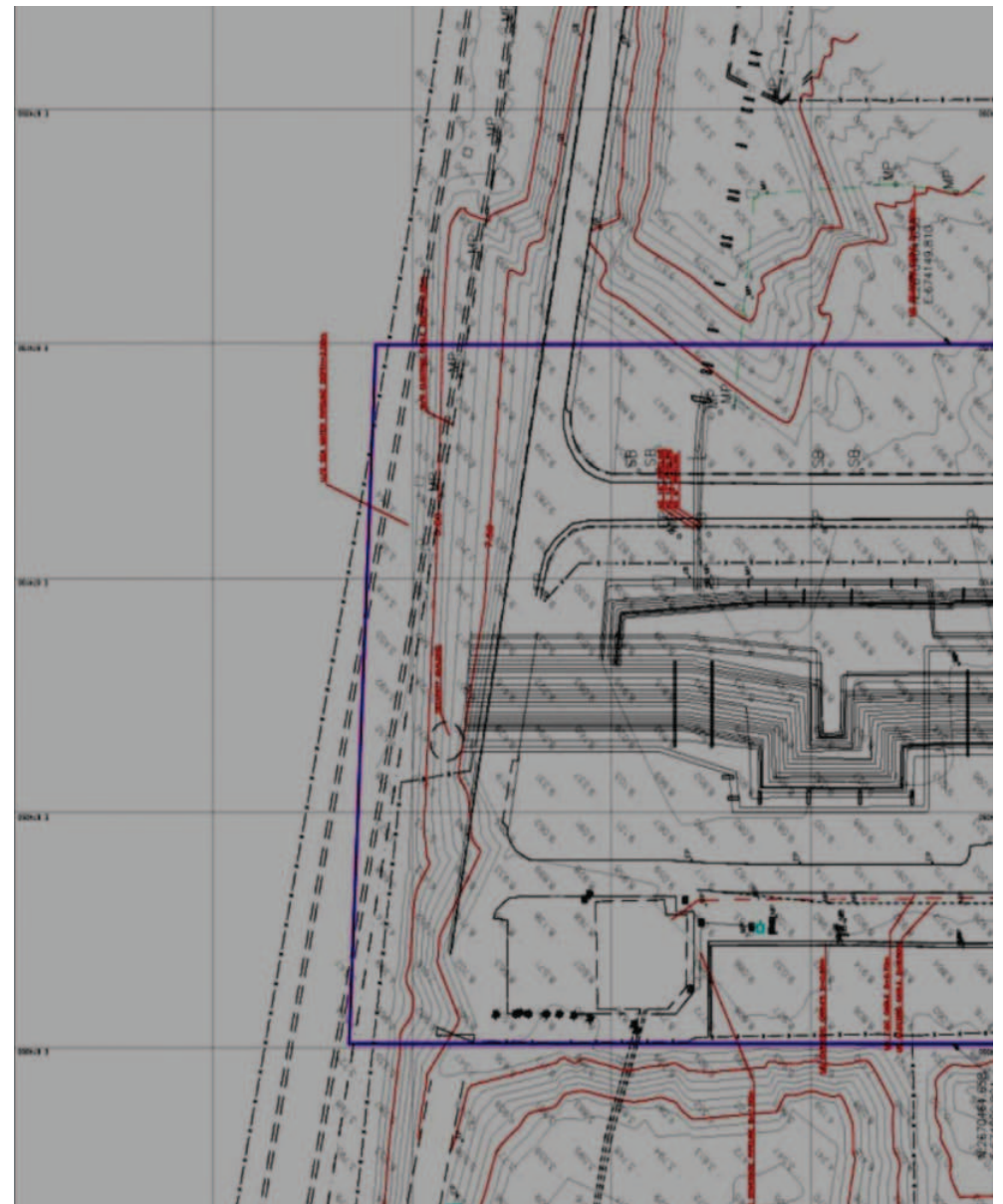
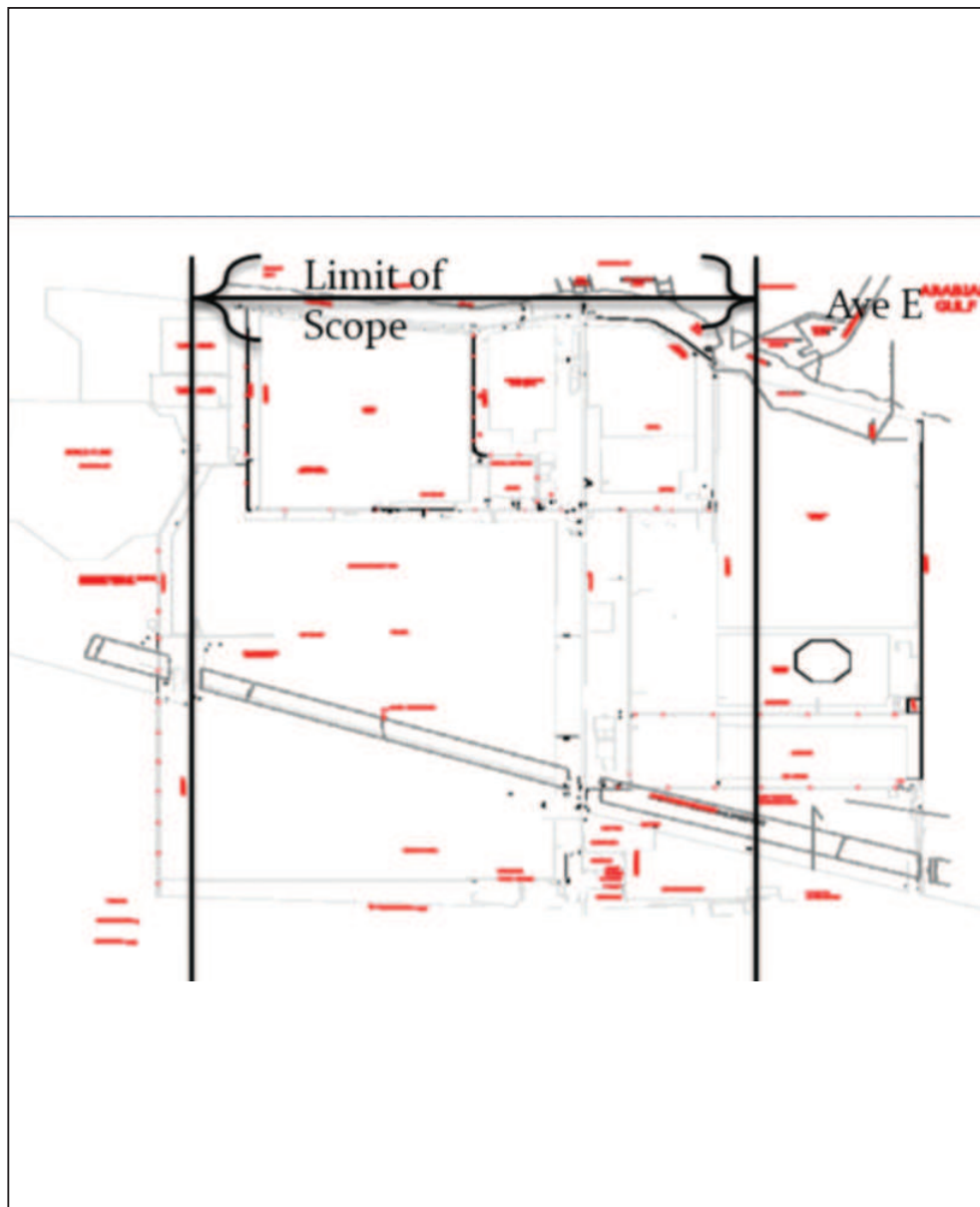
**Client:** Abu Dhabi Municipality  
**Location:** Abu Dhabi  
**Function:** Infrastructure  
**Service:** Design & Supervision



## Location & Mapping of UG Utilities, UAE

The works mainly consist of the preparation of as built drawings and elaboration of digital mapping which includes collection of available drawing from OPCO's, review and analysis of available existing drawings, site survey, and field detection of underground services including topographical survey

**Client:** Takreer  
**Location:** Al Ruwais  
**Function:** Government  
**Service:** Survey Underground  
**Area:** 25 Km<sup>2</sup>



## Maint. of Street Lighting Networks, UAE

The maintenance works, beautification, and upgrade of street lighting networks in Abu Dhabi City are being integrated with an initiative to replace the existing lighting system with more energy-efficient alternatives. This combined approach aims to enhance the city's aesthetics while promoting energy conservation and efficiency.

**Client:** ADM  
**Location:** Abu Dhabi  
**Function:** Maintenance  
**Service:** Supervision





## Blast Resistant Buildings

AIC places a high priority on security and safety by implementing infrastructure and building designs that are resistant to blasts. We make sure our facilities can withstand potential attacks by following to strict requirements and certifications. By advanced materials and technology and thorough personnel training, we ensure an effective environment. Moreover, working with authorities and always enhancing our security rules, we are dedicated to protecting our staff, property, and business operations from possible threats.

## Buhasa Main Plant Rooms (BLAST RESIST.), UAE

The project is two modular steel blast resistant operator rooms at Buhasa Plant, located approx. 180 km west of Abu Dhabi. It comprises of two Operator Maintenance Shelters (OMS) with Guard House and Car Parking. Design stages include: Pre-Conceptual, Conceptual Studies and Design and CSA Basic Engineering using the relevant international standards and codes

**Client:** Abu Dhabi Gas Industries Ltd. (GASCO)  
**Location:** Bushasa, Abu Dhabi, UAE  
**Function:** Shelters  
**Service:** Design  
**Area:** 280 m<sup>2</sup>



“

Altorath International Engineering Consultants L.L.C (AIC), a subsidiary of AAG is a recognized industry leader in the fields of Architecture, Engineering, and Project Management.

”

**Ahmed Almazrouei Group L.L.C. (AAG)** founded in 1989 is a UAE based business conglomerate. It manages a diverse portfolio of companies in UAE and abroad, covering a wide range of sectors that includes Architecture, Engineering, Project Management, Construction, Environmental, Real Estate, Trading and Food & Beverages. Primarily focuses within the GCC market the expansion of AAG activities now widening to global market.

With more than three decades of experience and more than 950 professionals, the name of Ahmed Almazrouei Group L.L.C (AAG) has become synonymous with dynamic growth, evidenced by its commitment to develop and grow business in multiple sectors and regions.

**Altorath International Engineering Consultants L.L.C (AIC)**, a subsidiary of AAG is a recognized industry leader in the fields of Architecture, Engineering, and Project Management. Since its inception in 1989, AIC has expanded to become one of the largest 100% UAE national firm. It provides a wide range of services with 12 offices across UAE and GCC region, with a worth exceeding \$40 billion of constructed projects.

[www.almazroueigroup.ae](http://www.almazroueigroup.ae)



## CONTACT US

**ABU DHABI**, UAE (Head Office)  
AAG H.Q, Al A'sam Street, Abu Dhabi, UAE, P.O Box: 4644

Tel: +971 (2) 404 1444  
Fax: +971 (2) 678 8620

For inquiries, please email: [admin@altorath.ae](mailto:admin@altorath.ae)

[www.altorath.ae](http://www.altorath.ae)



[altorath.ae](http://altorath.ae)